

CHARGING PERFECTED

High-Power Compact Charging System **SICHARGE D**

siemens.com/sicharge-d



SIEMENS

SICHARGE D – Dynamic high-power DC charger

Outstanding charging performance with SICHARGE D – all-round convenience that's designed to optimize charging and enhance profitability.

Models available from 160 kW to 400 kW

Parallel charging of up to five eVehicles

- Two built in DC outlets (2 × CCS)
- Two more DC charge points via optional Dispenser
- Optional additional 22 kW AC socket
- Liquid-cooled or non-cooled cables with up to 500 A
- High efficiency of >96% (peak) / 95% at full load
- Dynamic power allocation between DC charging outlets
- Various payment options
- Value-adding 24" flexible touch-screen
- Load management via OCPP and Modbus
- Excellent serviceability with Digital & Remote services
- Higher DC power can be upgraded in the field



Discover
SICHARGE D



A perfect fit for every use case

No matter what you need, and where you need it



Typical power range:
160 kW

Destination charging

- Unique, appealing design and value-adding screen
- Very compact footprint
- Cost-efficient extension of the charge points with the dual-plug dispenser



Typical power range:
240 kW

Public fast charging

- Robust housing including anti-vandalism protection IK10, which also protects its large screen
- Noise level parameterization (60...45 dB(A)) for example, for day and night mode
- Variety of payment options



Typical power range:
400 kW

Highway public charging

- Up to 400 kW/500 A continuous output on a single outlet
- High efficiency
- Highest utilization of installed power

Our three key promises:

Power and performance

Made for seamless and rapid charging, ensuring a swift and efficient experience every time.

Serviceability and comfort

Designed to integrate seamlessly into everyday life, offering maximum reliability and effortless charging.

Options and convenience for all

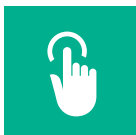
Equipped with versatile options and intuitive functions for convenient charging that is accessible to everyone.

SICHARGE D – Flexibility meets convenience

What makes the SICHARGE D special?

Weatherproof,
UV-resistant, color-stable,
and scratch-resistant

LED for user guidance
and DC status indication
left and right



Excellent user
experience and
easy handling



Easy payment and
billing with diverse
terminals options



Barrier-free
acc. to standard
DIN18040-3 ²



Cable management for
convenient and clean
operation

Fit for outdoor applications
IP54 and IK10

Shatterproof glass front IK10

DC charging outlet options:
2 × CCS2 or 4 × CCS2 with
Dispenser (non-cooled or
liquid-cooled cables)

IEC standard CE, RCM,
MID- or ERK-certified
metering

EMC Class B (optional)

- 1** High brightness, intuitive 24" touchscreen display for true barrier-free access and various customization opportunities
- 2** RFID card reader for user authentication
- 3** Integrated credit card reader: contactless or PIN-pad (optional)
- 4** Integrated emergency stop button (optional)

1 Up to 300 kW charger

2 Two variants: 360, and 400 kW

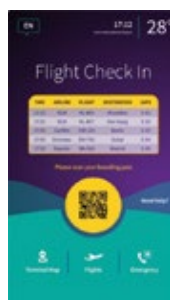
Customizable to fit your brand

You can freely use the SICHARGE D charger as an ambassador for your brand, whether through the individual foliation or by utilizing the large, accessible screen.



Add value with content at your multifunctional screen

It's more than a display – it's a value screen. Create your own content and add value for you and your customers.



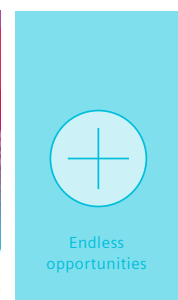
Information



Advertising



Instructions



SICHARGE D and Dispenser – A perfect match



**Up to 30%
increased
profitability**
compared
to other high-
power charging
systems

Initial investment

Lower upfront costs compared to alternative concepts.

Infrastructure

Fewer devices for same functionality.

Cabling

Lower expenses for cabling and earthworks.

Footprint

Occupies less space, maximizing utilization and minimizing land requirement.

One credit card terminal

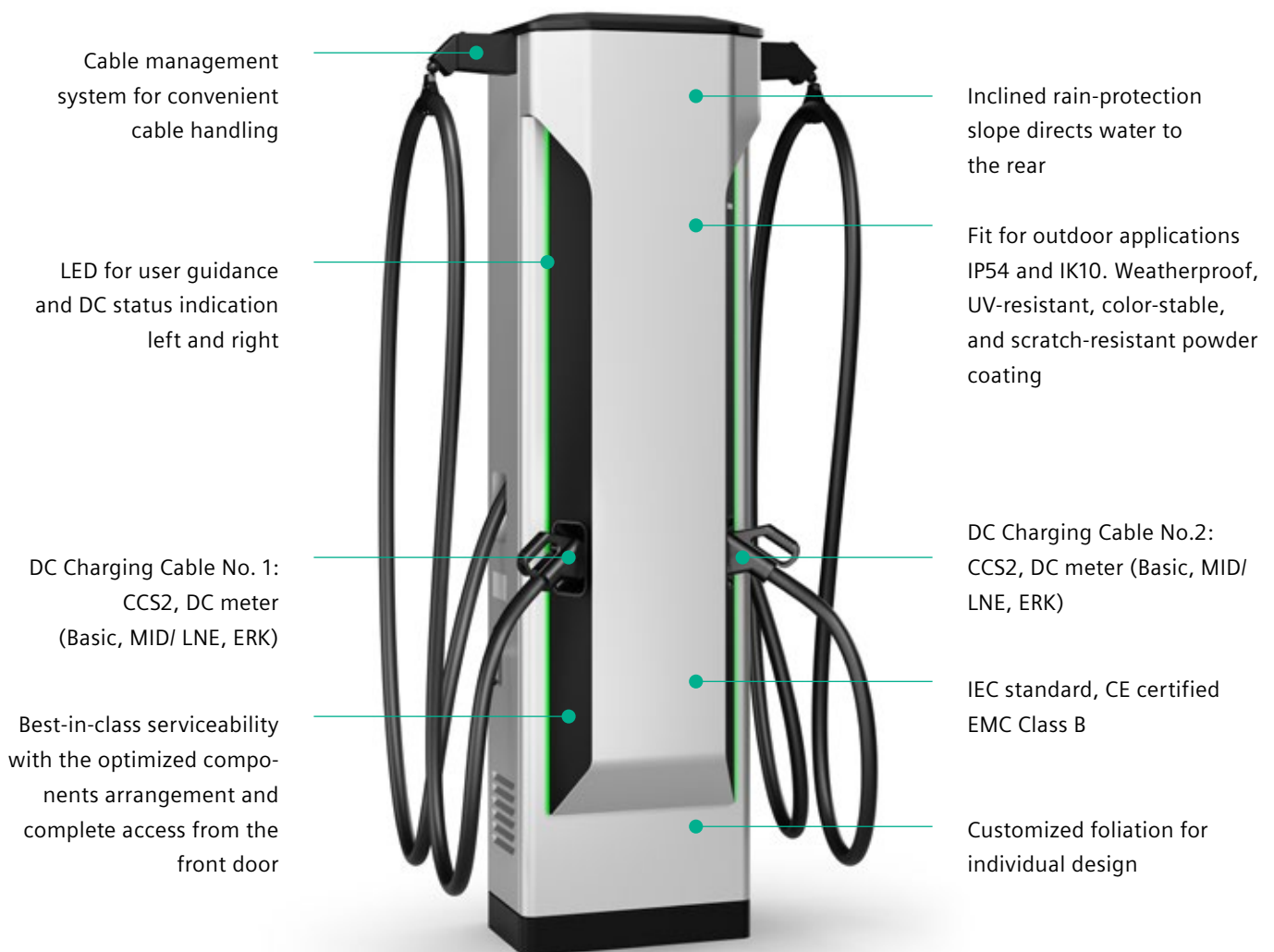
Less maintenance and operational overhead.

Dynamic Power Allocation

Overall power sharing across four DC outlets for maximized utilizations.

SICHARGE D Dispenser – Integrated, smooth charging packed full of features

What makes the SICHARGE D Dispenser special?



Fully integrated into the SICHARGE D environment

Empowering Dispenser operations:

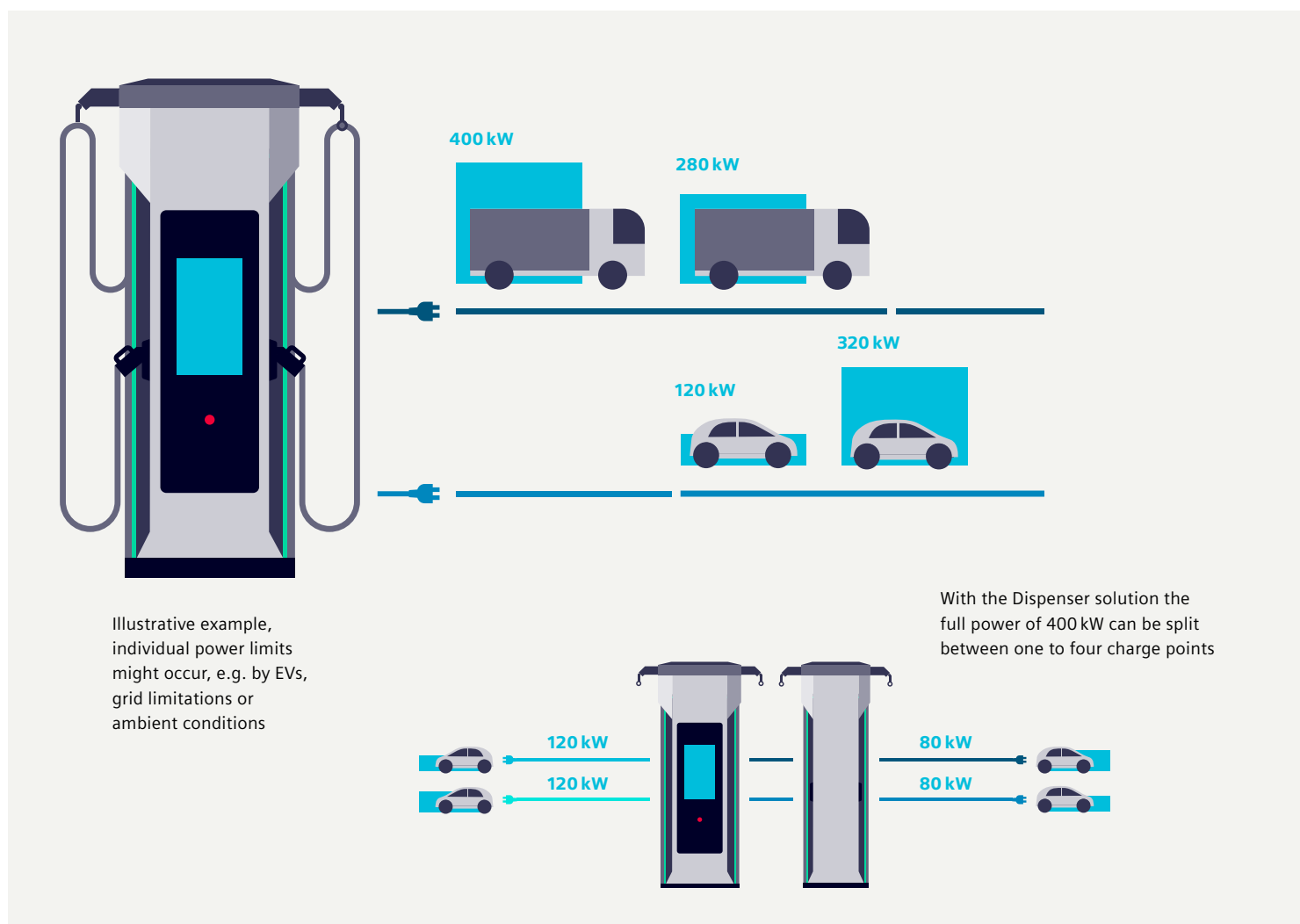
- The SICHARGE D high-power charger supplies electricity directly to the Dispenser
- DC busbar systems are in place to receive charge from the SICHARGE D
- Dispenser control and authentication is achieved via the SICHARGE D's HMI
- Enables DC charging up to four EVs in parallel



FuIIIDPA – Dynamic Power Allocation for optimized charging times

Intelligent and dynamic distribution of charging power

- Smart allocation of power converter groups on the fly according to the power demand of connected EVs
- Enables full power availability on one outlet, or the splitting of charge to up to four DC outlets
- Maximum utilization of installed power ensures shortest charging cycles and maximizes return on investment



Committed to **your goals**

Our team of **eMobility experts** are on hand to deliver best-in-class service:



Digital & Remote Services

Ensure the highest uptime and optimized performance of your charging assets.

On-Site & Spare Part Services

Ensure peace of mind thanks to expert service directly trained by the manufacturer and authentic spare parts.



Engineering & Integration Services

Guarantee the compatibility of your chargers with your fleet and backend to create a more efficient ecosystem.

Service Agreements

Tailored support from a reliable partner at a predictable cost for the highest uptime of your chargers.

eMobility Trainings

Benefit from firsthand knowledge and know-how, ensuring the highest quality support for your operations.

Upgrade & Retrofit

Increase the usage of your chargers and keep them updated to fit into the dynamic EV landscape.



SICHARGE D – Configuration Options Overview

Feature		160/180/240/300 kW	360/400 kW
Outlet options	CCS2	+	+
	CHAdeMO	+	–
	AC	+	–
Cable types	CCS non cooled	250A (3,1/5 m)	375A (5 m)
	CCS liquid cooled	500A (3,1/5 m)	500A (5 m)
	CHAdeMO	125A (3,1/5 m), 250A (3,1 m)	–
DPA configuration	Low Flex	+	+
	High-Flex w/o Dispenser prep.	+	+
	High-Flex w/ Dispenser prep.	+	+
Cable management		+	+
Barrier-free		–	+
Metering	w/o DC meter	+	+
	basic DC meter	+	+
	MID/LNE meter	+	+
	ERK	+	+
Payment	w/o CC terminal	+	+
	contactless	CCV, Payter P66	CCV, Payter P66
	w/ pin pad	Valina, Castles	Valina, Castles
Options	AC income meter	+	+
	Emergency stop	+	+
	DC fuses	+	–
	Enhanced SPD	+	– ¹
	EMC class B	+	+
	Crash sensor	–	+
	Noise reduction mode	+	+
External load management	+	+	

+ Available

– Not available

¹ Included if Dispenser prep. is configured

Your benefits at a glance



Up to 400 kW constant power output

Power and performance for fast en-route charging for passenger cars and trucks.



Fully compliant

Fulfilling all relevant standards, protocols, and norms incl. DIN 18040-3 for barrier-free access, as well as EMC class B.



Flexible through a variety of options

Reliable, user-friendly payment and billing systems – integration of various payment providers possible.



SICHARGE D and Dispenser – a perfect match

Space and money savings with SICHARGE D Dispenser. Allows the charging of up to four vehicles at the same time with one grid connection.



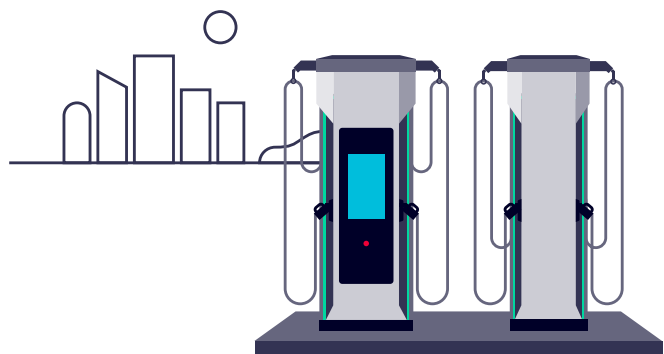
Committed to your goals

Tailored services and continuous support throughout the entire lifecycle of your charging equipment – from initial installation to gearing up for future challenges.



As individual as you like

Flexible design and foiling options – in addition, display can be used for advertising purposes.



SICHARGE D High-Power Charger

Technical data

AC nominal input

Input voltage	V	400 ± 10%
Current per phase	A	Max. 700A (@3~ 360V)
Frequency	Hz	50/60
Power factor	cos phi	> 0.99 (> 50% load)
Short circuit current rating	kA	50
THDi	%	< 3 (≥ 30% load)
Network type		TN-C, TN-S, or TT

DC output

Rated power	kW	160/180/240/300, NEW: 360/400
Upgradeability	kW	160kW upgradeable to 300kW, 360kW upgradeable to 400kW
Voltage (range)	V	150...1,000
Outlet options		All power classes: DC: 2 × CCS2; Optionally: 1 × CCS2 and 1 × CHAdeMO 1.2 ¹ AC Type 2 socket (with flap and shutter), 22 kW incl. RCD ¹
Current of connected cables	A	Non-cooled cables: CCS2: 250/400 peak ¹ or 375/500 peak ² , CHAdeMO: 125 ¹ ; Liquid-cooled cables: 500
Interface for additional Dispenser (parallel charging)		Preinstalled interface for one Dispenser with two DC charge points
Efficiency	%	95...96
Cable lengths	m	3,1 ¹ or 5

Environmental conditions

Operating environment		Indoor and outdoor
Operating temperature	°C	- 25...+55 Without power derating up to +35°C ¹ /+40°C ²
Operating altitude	m	≤ 2,000 above sea level (without derating)
Relative humidity	%	5...95 (non-condensing)

Mechanical specifications

Enclosure protection		IP54, IK10
Housing material		Powder-coated galvanized steel
Coating (corrosion class)		C4-M/C5-L
Overall dimensions W × D × H	mm	842 × 818 × 2,303 (1,251 × 829 × 2,394 with Cable Management System)
Rec. foundation dimensions W × D	mm	784 × 627
Weight	kg	Acc. to configuration; max. 820 ¹ /700 ²

General specifications

Local user interface and LEDs		Full-color 24" touchscreen with adaptable position of user interface; status LED per outlet
User authentication and payment		RFID, PIN code, QR code and smartphone, autocharge, credit-card (optional)
Network connection		Ethernet 10/100 Base; 2G; 3G; 4G (LTE)
Electric safety device		Surge protection, overvoltage category III
Operating noise level @ 3m distance	dB(A)	< 65 ¹ /62 ² (silent mode: 60...45, configurable times e.g., for day and night)
Metering options		No meter; DC meter: Basic meter, MID/LNE ³ or according to German MessEV ⁴ ; AC meter for Type 2 outlet: Basic meter or according to German MessEV ⁴ ; AC income meter
Remote management		Remote access, over-the-air (OTA) software updates, external load management via Modbus ⁵

Norms and standards

Charging standards		EN 61851-1/23, ISO 15118 (DIN 70121), IEC 62196-3 (Mode 4, Type 2)
Barrier free access		DIN 18040-3 ²
Communication protocol ⁵		OCPP 1.6 J
EMC standards		Immunity Class A (EN 61000-6-2, industrial); Emission Class A (EN 61000-6-3, industrial); Optional: Emission Class B (EN 61000-6-3, residential)
Certifications and conformity		CE, RCM, MessEV

¹ Variants up to 300 kW ² Variants 360 and 400 kW ³ Accuracy class B (acc.to EN 50470-3: 2006 and EN 50470-1:2006) ⁴ Accuracy class A (acc. to EN 50470-3: 2006 and EN 50470-1:2006) ⁵ For supported functionalities of OCPP, Modbus and ISO 15118, please refer to the technical documentation

SICHARGE D Dispenser

Technical data

DC output

Rated power	kW	Equivalent to SICHARGE D high-power charger ¹
Voltage (range)	V	150...1,000
Outlet options		2 × CCS2 DC charge points
Current of connected cables (max.)	A	250/400 peak (non-cooled cable)
Cable lengths	m	5

Environmental conditions

Operating environment		Indoor and outdoor
Operating temperature	°C	Ambient temperature – 35...+55 (without power derating up to +35)
Operating altitude	m	≤ 2,000 above sea level (without derating)
Relative humidity	%	5...95 (non-condensing)

Mechanical specifications

Enclosure protection		IP54, IK10
Housing material		Powder-coated galvanized steel
Coating		C4-M/C5-L
Overall dimensions W × D × H	mm	600 × 490 × 2,300
Foundation dimensions W × D	mm	600 × 342
Approx. weight	kg	200

General specifications

Local user interface (authentication and payment)		Available on connected SICHARGE D high-power charger, one status LED bar per outlet
Network connection		Ethernet 10/100 base (to SICHARGE D high-power charger)
Electric safety device		Surge protection, overvoltage category III, DIN EN 60664-1 (at connected SICHARGE D)
Protection class against electrical shock		Class I; IEC 61140
Metering options		No meter; DC meter: Basic meter, MID/LNE ² or according to German MessEV ³
Remote management		Remote access, over-the-air (OTA) software updates, external load management via Modbus TCP ⁴ (via connected SICHARGE D high-power charger)
Distance to SICHARGE D high-power charger		Up to 10 m cable length

Norms and standards

Charging standards		EN 61851-1/23, ISO 15118 (DIN 70121), IEC 62196-3 (Mode 4, Type 2)
Communication protocol ⁴		OCPP 1.6J (via connected SICHARGE D high-power charger)
EMC standards		Immunity Class A (EN 61000-6-2, industrial); Emission Class B (EN 61000-6-3, residential)
Certifications and conformity		CE, RCM, MessEV

¹ Restrictions by charging cable to be considered ² Accuracy class B (acc.to EN 50470-3: 2006 and EN 50470-1:2006) ³ Accuracy class A (acc.to EN 50470-3: 2006 and EN 50470-1:2006) ⁴ For supported functionalities of OCPP, Modbus and ISO 15118, please refer to the technical documentation

About Siemens eMobility

eMobility is already part of our everyday. And we are committed to anchoring this even more in everybody's daily lives by offering a charging infrastructure that is smart, efficient and innovative – and which makes mobility more sustainable ultimately.

And how do we do this?

By building an ecosystem to tackle the challenges of a complex world together. By cooperating with OEMs, utilities, fleet operators, companies, cities and customers alike – while bringing in the sound knowledge in energy supply, grids, mobility and buildings from a technology company that has been transforming the everyday for a 175 years. By connecting the real and the digital worlds with our IoT-enabled hardware, software solutions and service offerings that help customers and users save time, resources and costs.

And finally, with innovations like wireless or megawatt charging providing solutions for the challenges ahead. Our portfolio is designed for every use case in almost every region of the world – be it at home, at work, at bus stations, or within company depots.

To make a long story short: by electrifying mobility and making it more sustainable, we transform the everyday for a better tomorrow.

[siemens.com/emobility](https://www.siemens.com/emobility)

Published by Siemens AG

Smart Infrastructure
eMobility
Siemenspromenade 10
91058 Erlangen
Germany

Article No. SIE-B10004-02-7600
HL 2401 1468 BR 0624

© Siemens 2024

Status 06/2024

Subject to changes and errors. The information given in this document only contains general descriptions and/or performance features which may not always specifically reflect those described, or which may undergo modification in the course of further development of the products. The requested performance features are binding only when they are expressly agreed upon in the concluded contract.

All product designations may be trademarks or other rights of Siemens AG, its affiliated companies or other companies whose use by third parties for their own purposes could violate the rights of the respective owner.

