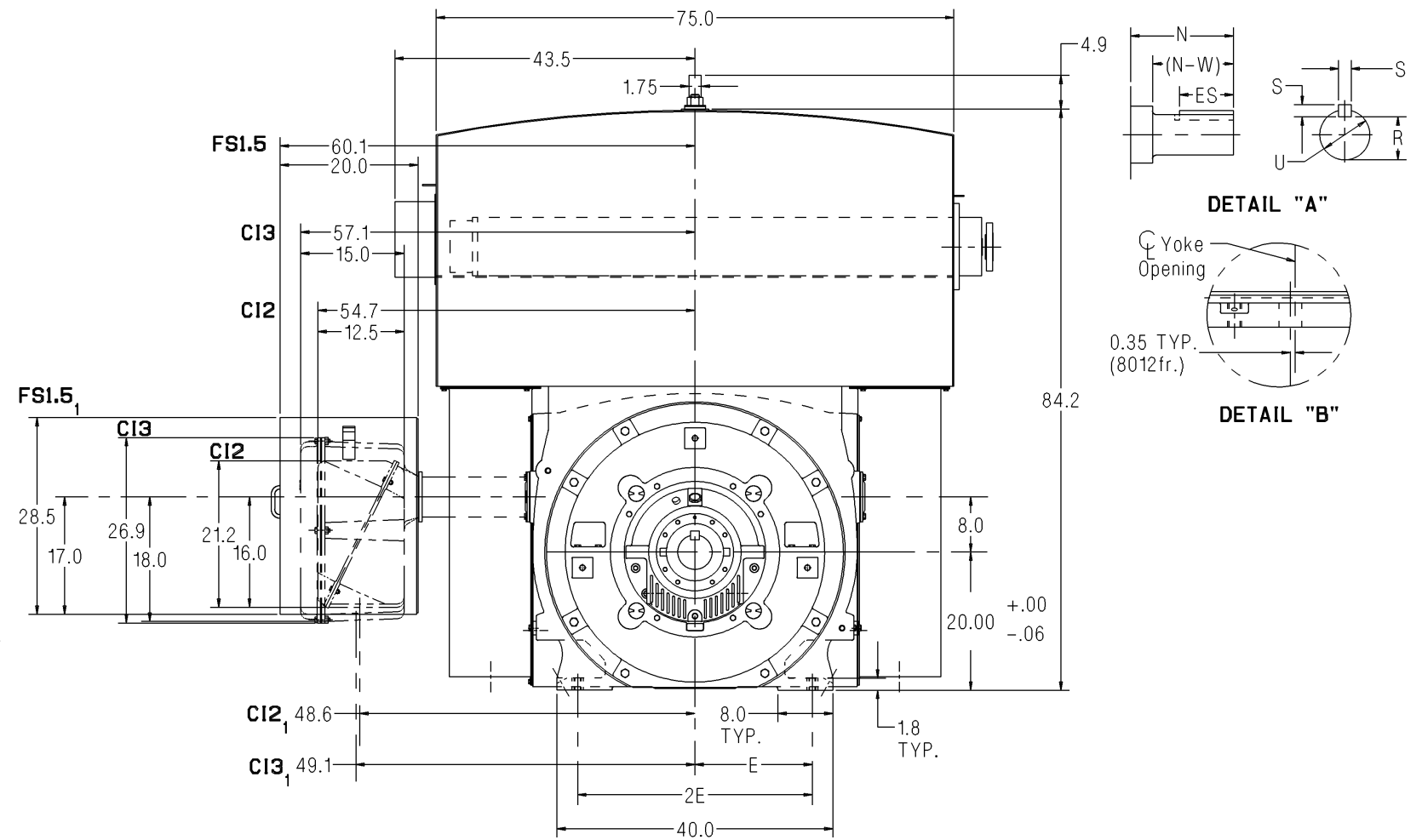
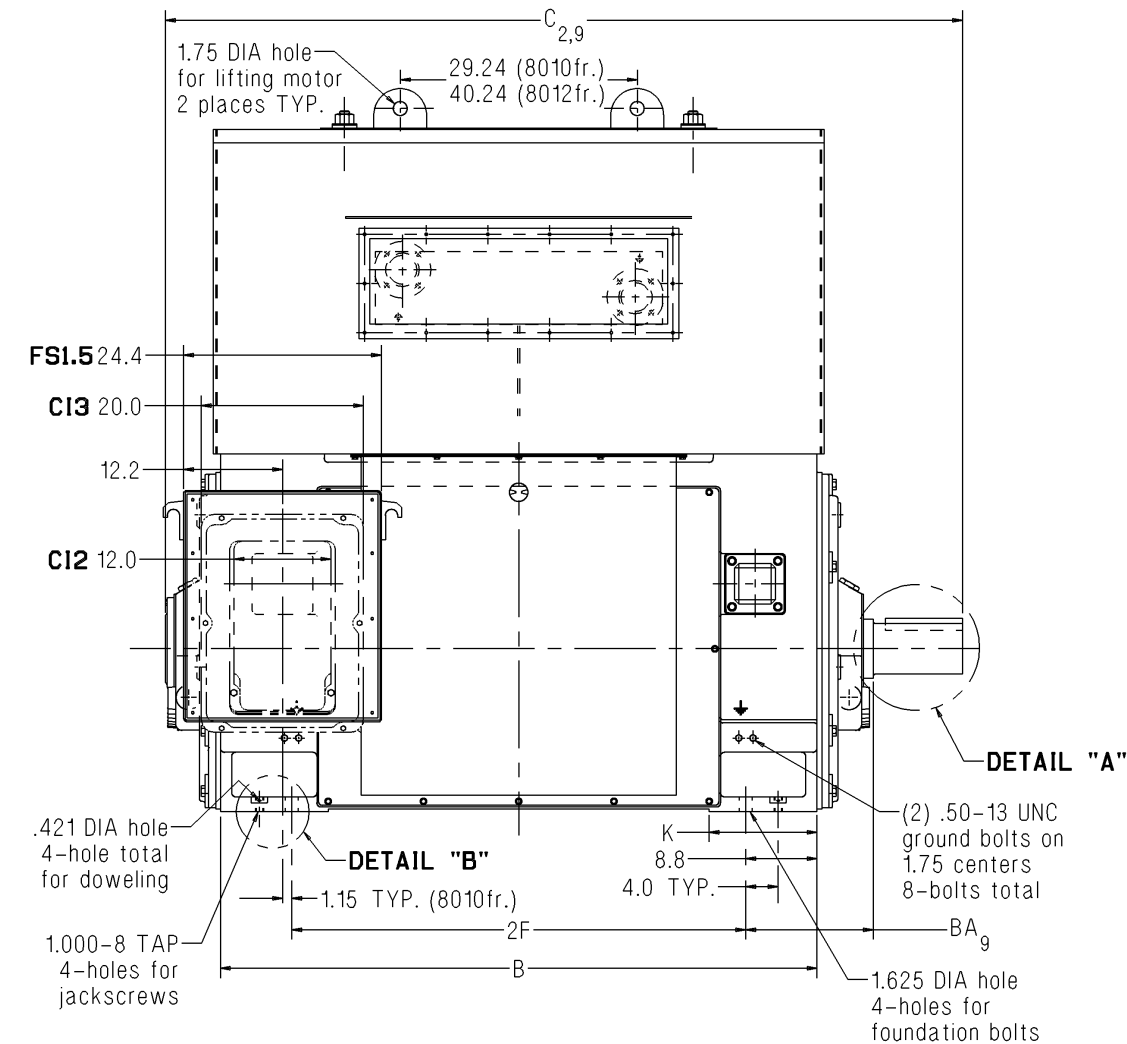


SIEMENS

Type CGG – Horizontal – Totally Enclosed Water to Air Cooled Sleeve Bearing – Direct Connected Frames 8010 / 8012 – Rotatable Main Conduit Box

Dimension Prints for Above NEMA Motors



Notes:

- Main conduit box may be rotated in steps of 90°.
A removable bottom plate is supplied on the FS1.5 conduit box.
A 5.0 N.P.T. is supplied on the C12 and C13 conduit boxes.
A 16.0" spacer is supplied on both frames for all rotatable conduit boxes.
- C = Length of motor from drive end of shaft to end of non-drive end of motor.
- V = (N-W)-0.25" = length of shaft available for coupling.
- 2 Pole machines may rotate in one direction only.
- Shims may be necessary under motor feet for direct connection.
- Rotor end float = 0.5"
- End float of LEF coupling = 0.19"
- Adding a rotating labyrinth seal to the drive end increases BA and C by:
2 Pole: 1.00" 4 Pole & Slower: 1.00"
- When adding a ground brush, consult the factory. (BA and C will increase.)
- For motors equipped with proximity probes use print CGG_800_2plusPL_SLVPRB_ROT.

Lubrication Per Bearing	
2 Pole	4 Pole & Slower
140-160 SUS @ 100°F	290-350 SUS @ 100°F
6.0 qt. capacity	6.0 qt. capacity

Standard Dimensions in Inches

Shaft	Frame	Speed	B	BA_9	$C_{2,9}$	E	2F	K	N	(N-W)	R	S	U	V_3	ES	Approx. Ship Wt. (Lbs)
Short	8010	2 Pole	73.6	15.75	95.6	17.0	56.0	13.3	9.50	8.75	4.296	1.25	5.00	8.50	7.0	21000
Short	8010	4 Pole & Slower	73.6	15.75	98.0	17.0	56.0	13.3	11.75	11.00	5.408	1.50	6.25	10.75	9.5	21900
Short	8012	2 Pole	88.6	15.75	110.6	17.0	71.0	14.8	9.50	8.75	4.296	1.25	5.00	8.50	7.0	25800
Short	8012	4 Pole & Slower	88.6	15.75	113.0	17.0	71.0	14.8	11.75	11.00	5.408	1.50	6.25	10.75	9.5	26800

Certification: Customer _____ P.O. _____ S.O. _____ Item _____
 HP _____ RPM _____ Frame _____ PH/HZ/Volts 3/_____/_____
 By _____ Date _____ Terminal Box Size C12 C13 FS1.5

Comments _____
 Not for construction, installation or application purposes unless certified.

CGG_800_2plusPL_SLV_ROT
 Revision 02
 01/26/09