

-01 CAT# 6JJ62
 -02 CAT# SJ2D

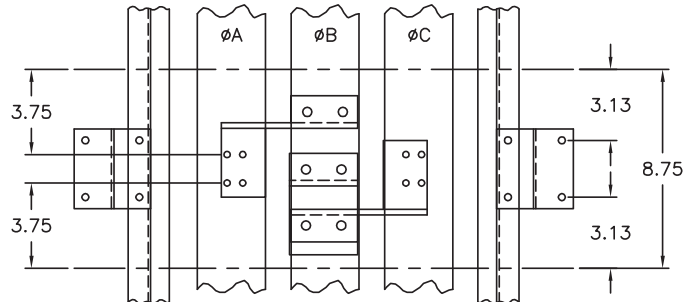
TORQUE VALUES

- ④ - 12 FT./LBS.
- ⑩ - 72 IN./LBS.

PC. -01 ASSEMBLY USED ON STRAP KIT 6JJ62
 PC. -02 ASSEMBLY USED ON STRAP KIT SJ2D

FOR ITE BREAKER TYPES:
 JD2, JJ6, JL6, HJ6, JXD2
 JXD2, JXD6, JD6, HJD6, HHJD6

-02	-01	ITEM	PC. NO.	DESCRIPTION
2	2	1	11-6398-01	MOUNTING BRACKET
2	2	2	16-6974-01	ØAC BRANCH BUS
1	1	3	16-6949-02	ØB BRANCH BUS
6	6	4	11-1566-07	5/16-18 X 1-1/4" HHMS
6	6	5	11-1618-04	5/16" LOCK WASHER
6	6	6	11-1615-06	5/16" FLAT WASHER
6	6	7	11-1620-04	5/16-18 INSERT
1	1	8	12-6139-01	FRONT PLATE
6	6	9	11-1553-02	1/4-20 X 3/8" SHWHSW
2	2	10	11-B-2022-05	STRAP-BUS HARDWARE KIT
4	4	11	11-1542-14	1/4-20 X 2-3/4" SRHMS
1	1	12	12-5531-11	FILLER PLATE ASSEMBLY
1	-	13	31-1223-01	INSTRUCTION SHEET
1	1	14	15-A-1027-01	CARTON LABEL
2	2	15	11-7505-01	CIRCUIT I.D. CARD
2	2	16	11-7506-01	CARD HOLDER
4	-	17	11-1546-03	1/4-20 X 5/8" HHMS
4	-	18	11-1618-03	1/4" LOCK WASHER
4	-	19	11-1615-04	1/4" FLAT WASHER
-	-	20	11-1580-02	3/8-16 X 1" RHSNB
-	-	21	11-1622-01	3/8-16 BELLEVILLE WASHER NUT
1	1	22	48001057	CARTON
-	1	23	11-5570-02	SERIES 5 CONVERSION KIT
-	1	24	31-1169-01	INSTRUCTION SHEET
-	-	25		
-	1	26	12-B-2105-04	NEUTRAL LUG ASSEMBLY
1	-	27	12-B-2105-06	NEUTRAL LUG ASSEMBLY



⚠ DANGER

Hazardous voltage. Will cause death or serious injury.

Keep out. Qualified personnel only. Disconnect and lock off all power before working on this equipment.

Rev	C.N.	Date	Do not scale drawing
11	1C-831B	7-31-06	.XX ± .030
10	1C-831A	04-12-04	.XXX ± .015
9	1B-908	5-8-95	Angular ± 2'
8	1B-359	11-11-92	
7	1B-190	2-11-92	
6	1A-939	7-22-91	
5	1A-280B	1-31-91	
4	1A-280	11-30-90	
3	1A-066	2-16-89	
2	8A-093	7-15-88	
1	945		
0	864	4-12-84	

Unless otherwise specified dimensions are in inches
 Tolerances are non-cumulative and are as follows unless specified otherwise.

Dwn KDM Date 4-12-84
 Chk SH Date 11-30-90
 Apvd PM Date 11-30-90

Confidential - Property of
Siemens Industry, Inc.
Norcross, GA

JD FRAME TWIN MOUNTING
SERIES 6 BRANCH

Dwg. No. 12-5721
 Scale NONE
 Sheet 1 of 1

FOR USE WITH JXD2, JXD6, JD6 AND HJD6 FRAME BREAKERS MOUNTED IN SPP/FPP/S5/F2/P5 PANELBOARDS (DEEP BOX).