



**10 reasons why switch to
SINUMERIK ONE now!**

1 - SINUMERIK ONE

An established global presence

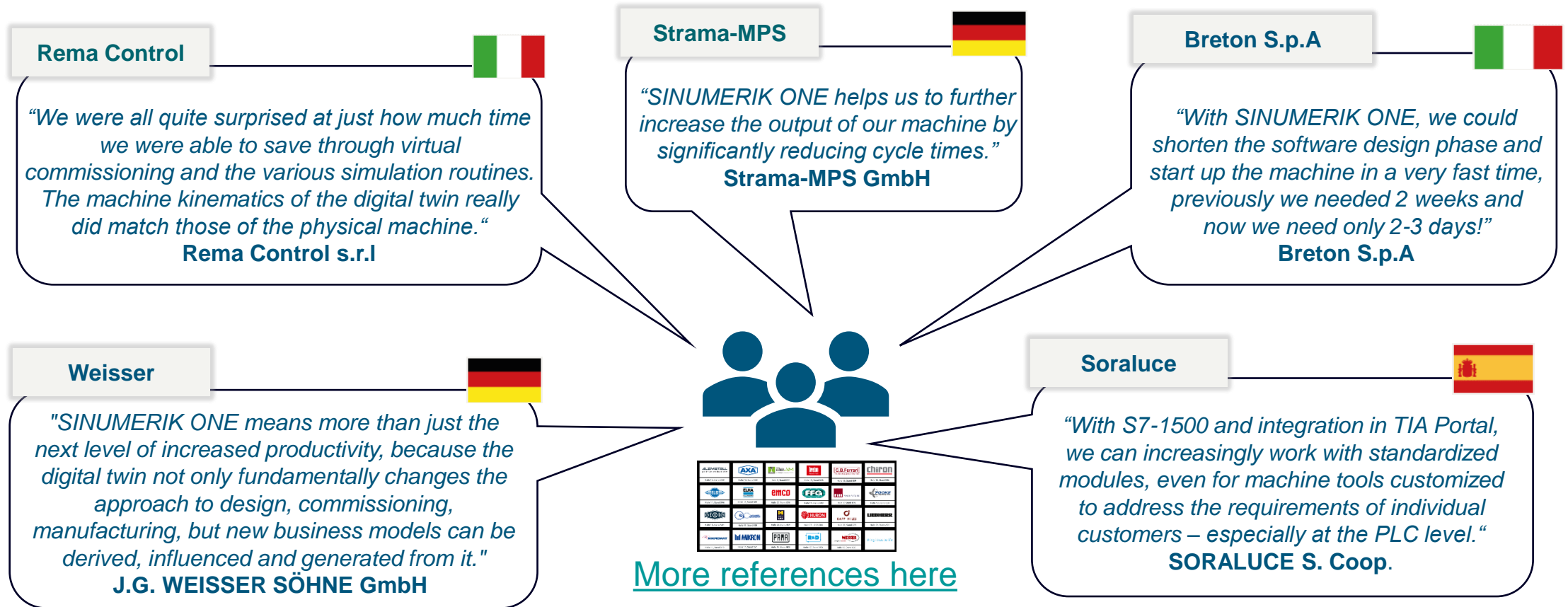
SINUMERIK ONE is available world-wide and used by over 350* machine builders already



Status: December 31st 2021

2 - SINUMERIK ONE

Customers resonate with our innovation and technology



Integrated SIMATIC S7-1500F PLC, Digital Twin for automation, improved performance of NC & PLC have been confirmed as decisive factors for the choice of SINUMERIK ONE by several initial customers

3 - SINUMERIK ONE ...

... is the preferred CNC for all new automotive projects

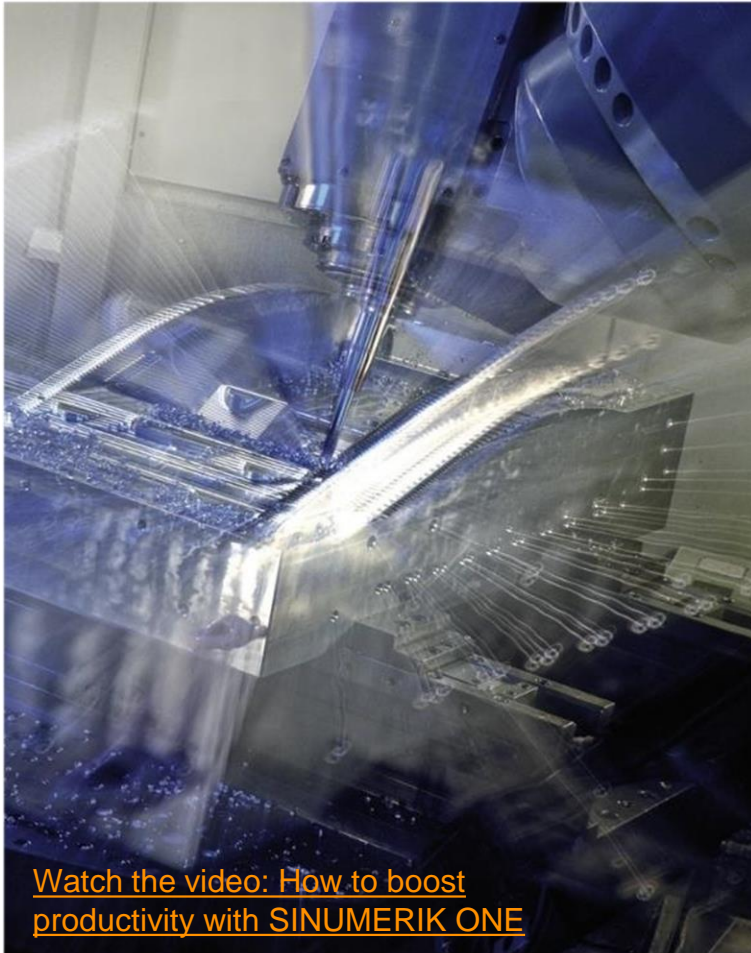


Link to TRANSLINE Standard Manual Set
(Registration required)



4 - SINUMERIK ONE

Highest CNC performance



Interpolating 5 axis simultaneously at a speed of 10 m/min, following of points that are a fraction of a millimeter apart with an accuracy of a few thousandths of a millimeter requires extraordinary computing power and sophisticated algorithms.

30% faster machining time
5 axis machining (finishing)

20% faster machining time
3 axis machining (finishing)

Up to values vs comparable SINUMERIK 840D sl with SW 4.8

5 - SINUMERIK ONE

Maximum compatibility for the machine user



SINUMERIK ONE offers a modern look and feel and numerous new functions for the operator.

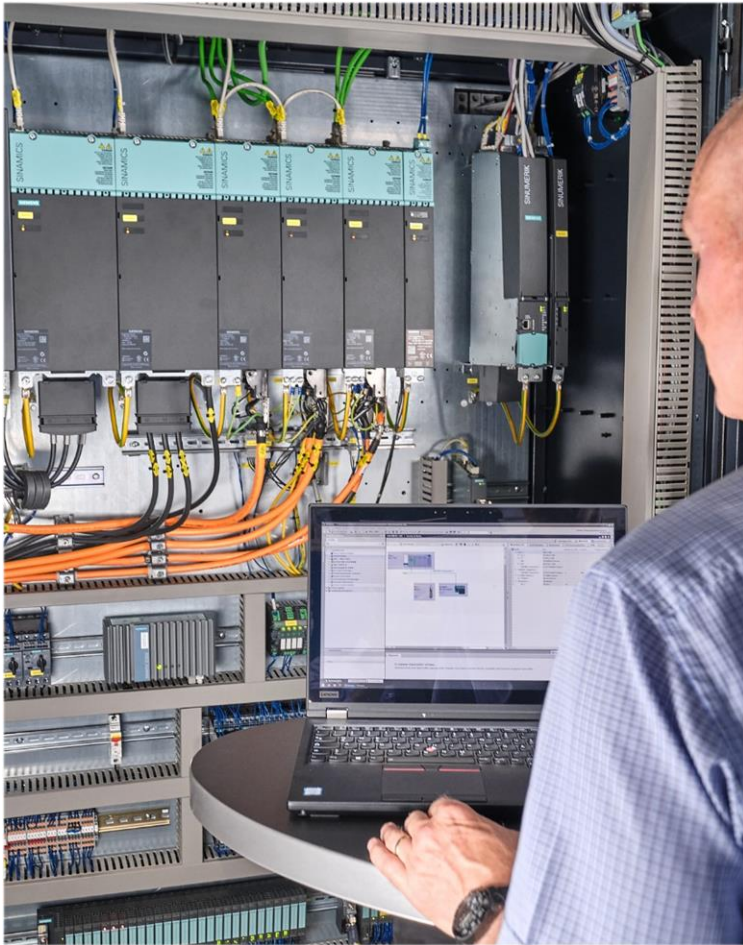
Programming and operating remain unchanged, which makes the changeover to SINUMERIK ONE extremely simple for the operator.

In addition, SIMOTICS motors and SINAMICS drives are identical and are therefore interchangeable and connection-compatible.

100% Compatibility of programming, operation, drives and motors

6 - SINUMERIK ONE

State of the art automation



The TIA Portal has become established as the best and most innovative engineering system on the market.

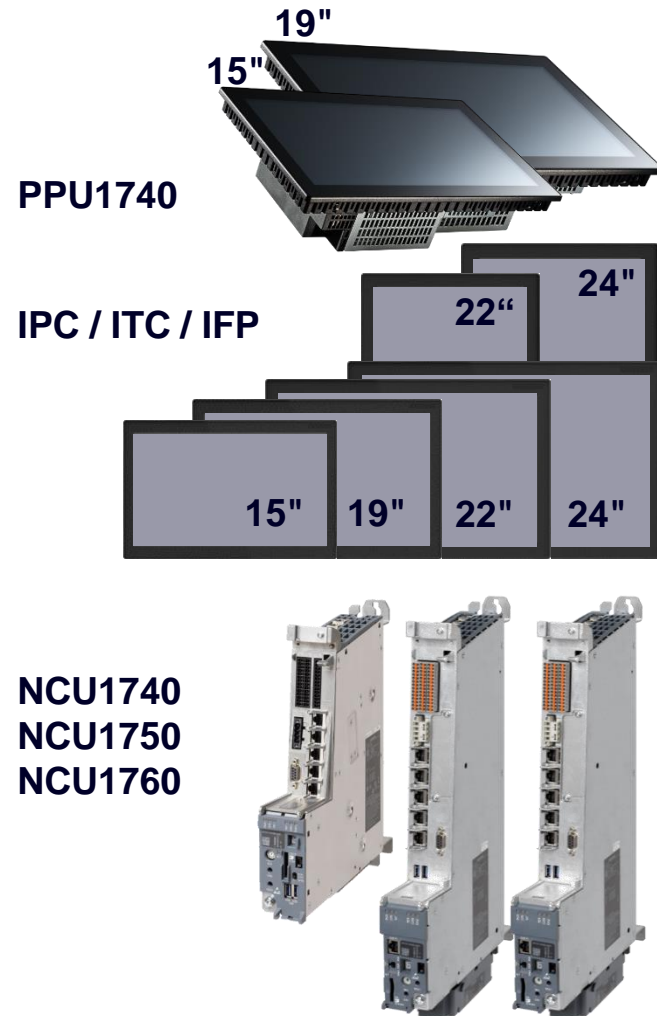
With SIMATIC S7-1500F PLC, SINUMERIK ONE is completely integrated into TIA Portal and thus enables standardization of all engineering and maintained tasks.

SINUMERIK ONE brings together the worlds of automation and manufacturing, creating the necessary synergies.

TIA Portal seamless integration

7 - SINUMERIK ONE

Ultimate scalability



From the simplest to the most complex and performing machine tools, SINUMERIK ONE, thanks to its operating panels from 15" to 24" both in landscape and portrait version and compact panel based or ultra performing cabinet based CNC units, always offers the most suitable solution.

Machine builders benefit from increased flexibility, while end users can further standardize processes and machine fleets.

ONE System Platform

8 - SINUMERIK ONE: Machine operation like never before



Program run-in is the most delicate task for the operator: eyes fixed alternatively on the moving tool and panel, both hands are fixed on the machine control panel and ready for any reaction.

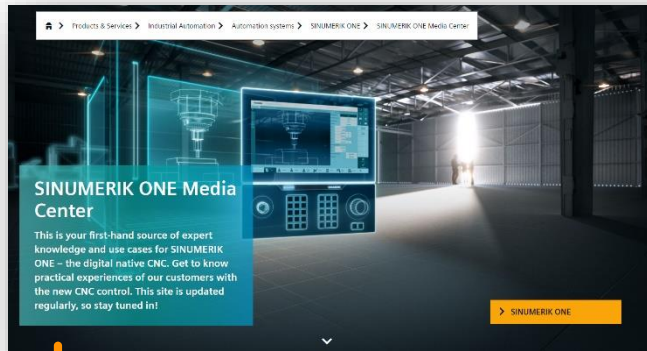
SINUMERIK Powerride, the core component of the new control panels, allows one-handed operation and reduces the need to take the view away from moving machine.



SINUMERIK Powerride One hand operation

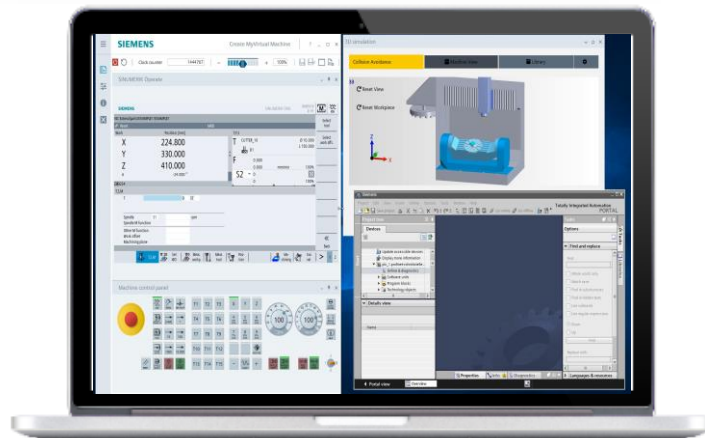
9 - SINUMERIK ONE

The first 'digital native CNC' enables new opportunities for the OEM



[Check out references for digital twin](#)

The commissioning data from TIA Portal provides the basis for the digital twin of the automation system: Create MyVirtual Machine. This digital twin makes it possible to engineer the machine even before the real-life prototypes are available.



The only CNC system that offers seamless interplay between the virtual and the real spheres

[Watch the video:](#)
[Digital twin for machine builder](#)

[Watch the video:](#)
[Digital twin for machine user](#)

10 - SINUMERIK ONE ...

... is the successor of SINUMERIK 840D



- For more than 15 years, the **SINUMERIK 840D sl** has set the standard for high-performance machine tools
- With SW 4.95, SINUMERIK 840D sl has reached full maturity and needs no further development
- The SINUMERIK 840D sl is part of our established CNC system family, and we plan to market it until **September 2024***
- New innovations for high performance CNC's will be developed exclusively on **SINUMERIK ONE** CNC
- The SINUMERIK ONE has an ideal architecture to cover any future developments, offers higher performance and more innovative functions than the SINUMERIK 840D sl, while providing full programming and operational compatibility for machine users
- In addition, it is a Digital Twin trendsetter, increasing efficiency in machine manufacturing and productivity

* If unforeseen events occur, such as components being discontinued at short notice by our suppliers or applicable standards being tightened, we reserve the right to phase out individual modules from the above-mentioned system family before 2024

The time is ...



... now.

Disclaimer

© Siemens 2022

Subject to changes and errors. The information given in this document only contains general descriptions and/or performance features which may not always specifically reflect those described, or which may undergo modification in the course of further development of the products. The requested performance features are binding only when they are expressly agreed upon in the concluded contract.

All product designations may be trademarks or other rights of Siemens AG, its affiliated companies or other companies whose use by third parties for their own purposes could violate the rights of the respective owner.