

# SIEMENS

Ingenuity for life

## WinCC OA IOT Suite

empowered by  
SIMATIC WinCC Open Architecture

[siemens.com/wincc-ia-iot-suite](https://siemens.com/wincc-ia-iot-suite)

### WinCC OA IOT-Box-SW

WinCC OA IOT-Box-SW for SIMATIC Nanobox (IPC1XX, IPC2XX, IPC4XX) and Industrial OS 2.1 (both not included).

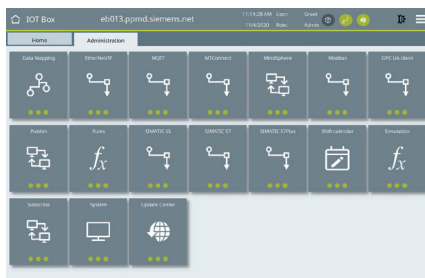
Included apps:

Dashboard, Data Mapping, Ethernet IP, System Log, MindSphere, Modbus, MQTT, MTConnect, OEE, OPC UA, Publish, Rules, S5, S7, S7 Plus, Shift calendar, Snapshot, Subscribe, System, Update Center. Up to 1000 Tags, up to 3 user interfaces. Automatic updates of WinCC OA IOT-Box-SW and apps via IOT-OPA possible (requires separate IOT-OPA-SW license). Perpetual License.

1x WinCC OA IOT-Box-SW:  
**6AV6356-1AA31-7AA0**

10 x WinCC OA IOT-Box-SW  
**6AV6356-1AA31-7AA1**

20 x WinCC OA IOT-Box-SW  
**6AV6356-1AA31-7AA2**



WinCC OA IOT Suite

### WinCC OA IOT-OPA

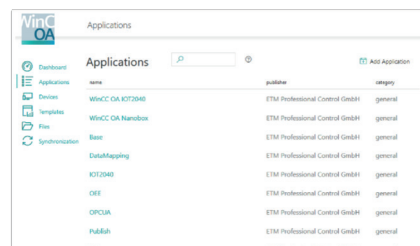
Allows secure administration of devices running WinCC OA IOT-Box-SW. Includes update option for WinCC OA IOT-Box-SW and Industrial OS 2.1 (Equivalent to SUS). Can be installed as On-Premise or in cloud. Operating System is Industrial OS 2.1. Subscription license.

WinCC OA IOT-OPA-SW for update and administration of up to 10 devices. Connection to IOT-Repository included.  
**6AV6356-1BA31-7BA0**

WinCC OA IOT-OPA update extension for 10 further devices  
**6AV6356-1BA31-7BA1**

### WinCC OA IOT-Repository

Enables distribution of WinCC OA IOT-Box-SW-packages and App-packages to WinCC OA IOT-OPAs. Connections to additional IOT Repositories are free of charge. Device management is excluded. Includes connection to WinCC OA IOT-OPAs. Can be installed on premise or in cloud. Operating System is Industrial OS 2.1. Prerequisites for the use are valid WinCC OA IOT-Box-SW licenses as well as a corresponding right to update devices (bound to the IOT-OPA license).



WinCC OA IOT-Repository

# WinCC OA IOT Suite empowered by SIMATIC WinCC OA

## Scope of solution:

- Targets for **brownfield retrofit**  
**Cloud usage optional**
- Provides **infrastructural services** to explore **new ways of deployments**

## IOT-Repository:

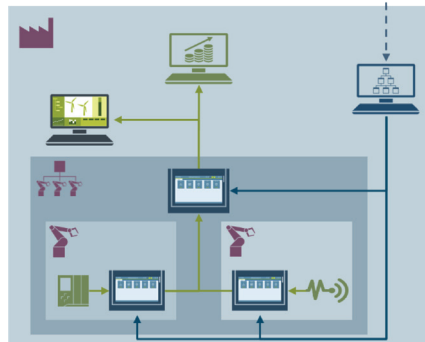
- Cloud-based for simple distribution of 3<sup>rd</sup> party apps & updates

## Major USPs of IOT-OPA:

- Automated maintenance of devices, SW, OS
- Enhancing machines after commissioning
- Enables additional/new business models

## Major USPs of IOT Box SW:

- Commissioning **within 1h by electrician**
- Easy collection and preprocessing of data
- Local visualization Forwarding information



## Technical features of IOT-OPA:

- **Central repository** for SW, Apps and OS incl. patches
- Device management including **automatic patch deployment**
- File exchange/storage for back-up/restore and templates

## Technical features of IOT Box SW:

- **Apps** are WinCC OA applications
- Based on a WinCC OA IOT Framework Standard **WinCC OA**  
Based on **SIEMENS Industrial OS**

## Based on Siemens industrial Hardware:

- SIMATIC Nanobox (IPC1XX, IPC2XX, IPC4XX) supported
- Will be delivered as SW only as well

## Update mechanism:

- **Devices and SW/Apps supporting different states**
- Devices can be operated **stand alone as well**
- **System established officially inside SAG** (ATOS approved)

For the secure operation of Siemens products and solutions, it is necessary to take suitable preventive action (e.g. cell protection concept) and integrate each component into a holistic, state-of-the-art industrial security concept. Third-party products that may be in use should also be considered.

For more information about industrial security, visit <http://www.siemens.com/industrialsecurity>.

ETM professional control GmbH  
A Siemens Company  
Marktstrasse 3  
7000 Eisenstadt  
Austria

+43-2682-741-0  
[www.etm.at](http://www.etm.at)  
[info@etm.at](mailto:info@etm.at)

Subject to change 11/20