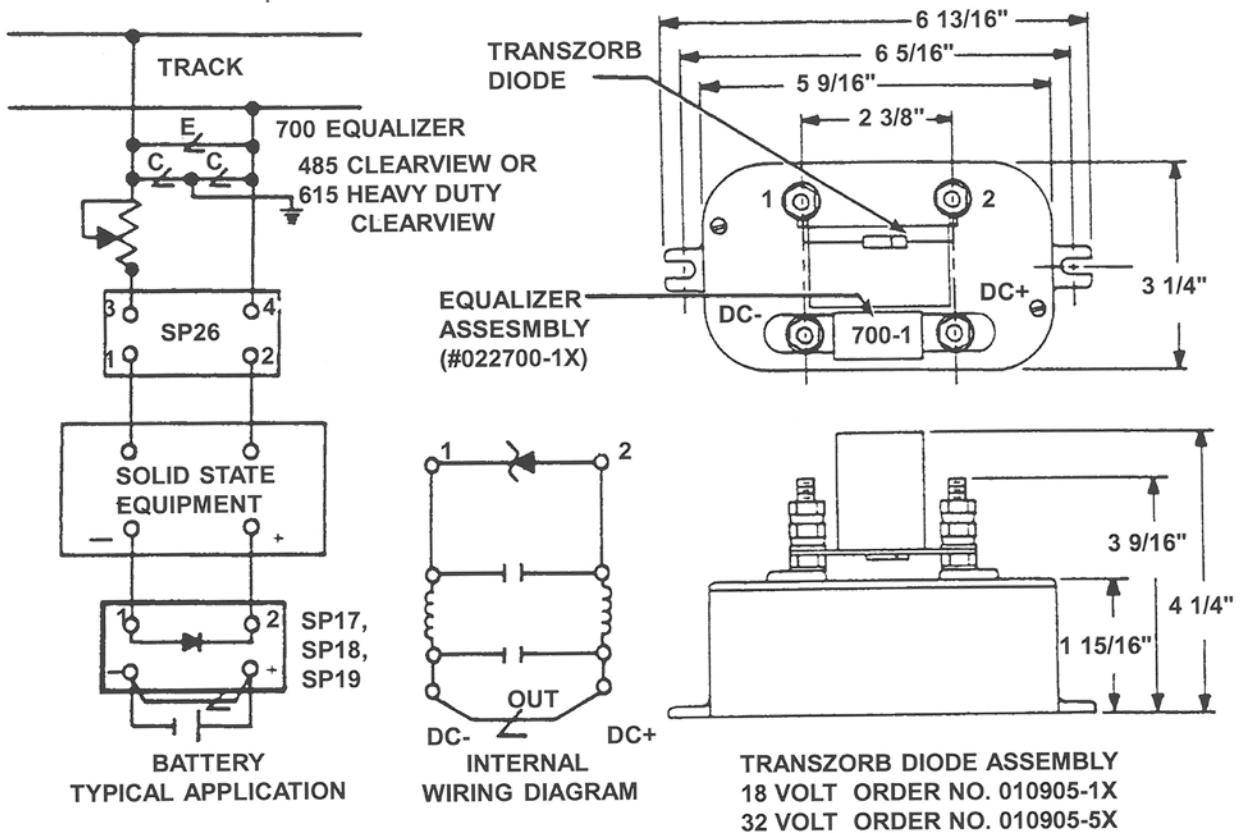


Surge Protection Network

BATTERY LINE PROTECTORS

MODEL SP17-2A MODEL SP17-2B
 MODEL SP18-2A MODEL SP18-2B
 MODEL SP19-2A MODEL SP19-2B



TO ORDER: SPECIFY SURGE PROTECTION NETWORK, MODEL NUMBER AND ASSEMBLY NUMBER

MODEL NUMBER	ASSEMBLY NUMBER	VOLTAGE D.C. MAXIMUM	CURRENT AMPERAGE MAXIMUM	RESISTANCE OHM PER LINE	INDUCTANCE MICROHENRY PER LINE
SP17-2A	010804-5AX	18	1.5	1.1	550
SP17-2B	010804-5BX	32	1.5	1.1	550
SP18-2A	010805-4AX	18	5	0.35	185
SP18-2B	010805-4BX	32	5	0.35	185
SP19-2A	010806-3AX	18	10	0.02	18
SP19-2B	010806-3BX	32	10	0.02	18

NOTE: BATTERY WIRES MUST BE #12 OR LARGER, OR A FUSE MUST BE USED TO PREVENT DAMAGE, IF TRANSORB DIODE FAILS.