

WARNING:
HAZADOUS VOLTAGE CAN CAUSE ELECTRIC SHOCK AND BURNS.
DISCONNECT POWER BEFORE PROCEEDING WITH ANY WORK ON THIS EQUIPMENT

NOTICE
This product has been designed for environment A. Use of this product in environment B may cause unwanted electromagnetic disturbances in which case the user may require to take adequate mitigation measures.

Disposal

Siemens products are environment friendly, which predominantly consist of recyclable material. For disposal we recommend disassembling and separation into following materials.

METAL : Segregate into Ferrous & Non Ferrous types for recycling through authorised dealer.

PLASTIC : Segregate as per material type for recycling through authorised dealer.

Because of the long lifetime of Siemens products the disposal guidelines may be replaced by other national regulations when taking the product out of service. The local customer care service is available at any time to answer disposal-related questions.

Voltage (V)	Standard Coils			Electronics Coils*			
	AC			AC		DC	
	110	230	415	81-136	137-273	24	52-55
Codes	F0	P0	R0	F7	M7	B4	E4

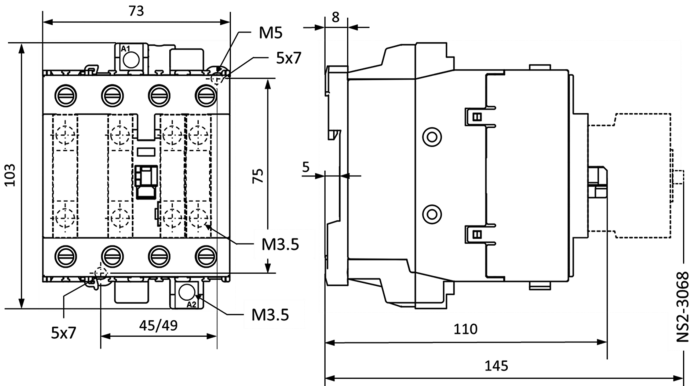
* For Low freq. EMC applications (< 100 MHz) please use RC Element.
For details refer Product Catalogue"

3TS35-37 00-0A/0B..4-....

93-22

Cut from this edge to read information printed

Installation :
Mounting Dimensions (in mm)

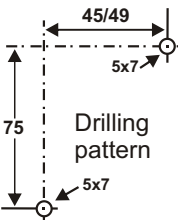


Allowable conductor sizes :

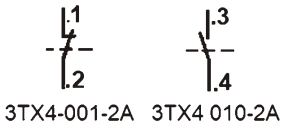
- a) Main Terminal:
- Terminal screw M4
 - Stripped length 10mm
 - Tightening Torque 2.5 to 3.0 Nm.

	One Terminal connected		Both Terminal connected	
	1 to 16	1 to 16	Max. 16	Max. 16
Solid [mm ²]	1 to 16	1 to 16	Max. 16	Max. 16
Finely stranded [mm ²] without end sleeve	2.5 to 16	2.5 to 16	Max. 10	Max. 10
Finely stranded [mm ²] with end sleeve	1 to 16	1 to 16	Max. 10	Max. 10

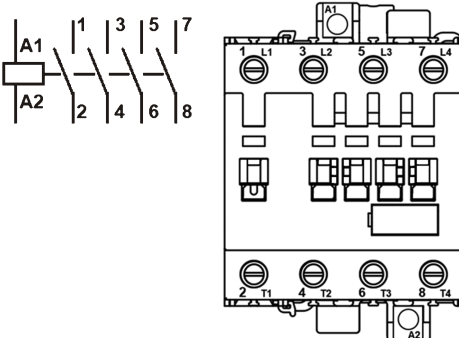
- b) Auxiliary terminal
- Stranded with end sleeves 2x(0.75 to 2.5) sq.mm
 - Solid 2x(1.0 to 2.5) sq.mm
 - Terminal Screws M3.5
 - Stripped length 10mm
 - Tightening Torque 0.8 to 1.4 Nm



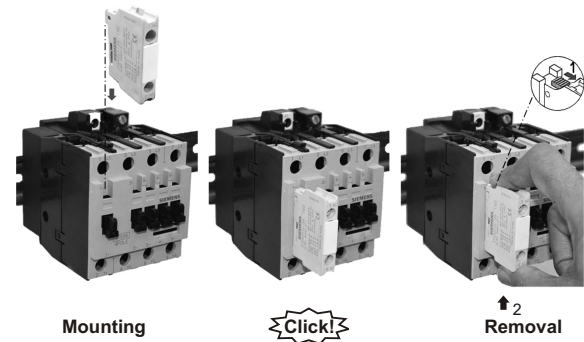
Circuit Diagrams:
Auxiliary contact blocks (Max 3x only)



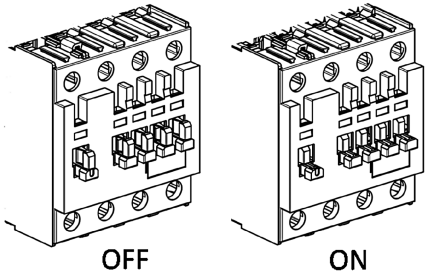
Main circuit :
Without any Auxiliary contact



Maintenance:
Auxiliary Contact Block Replacement (Common for AC contactor and DC contactor).



ON - OFF Indication



Maintenance

The following components can be replaced and available as spares:
Magnet coil, Main contacts, Aux. contact block.

For replacement of main contacts follow the steps in the operating instructions enclosed with respective spare component kit.