



Pre-Configuration and Testing Services

True “plug and play” capabilities - saving time and money

Industrial companies everywhere are looking for ways to **save time and money, but not at the risk of quality and reliability.**





When it comes to network projects (new or expansion) great savings exist with offloading device configuration and testing to a **trusted partner who can deliver the same quality companies expect from their own teams.**

SIEMENS

Most, if not all, communication devices arrive with standard default settings. Each device must then be configured based on project requirements, and further tested before commissioning can begin.

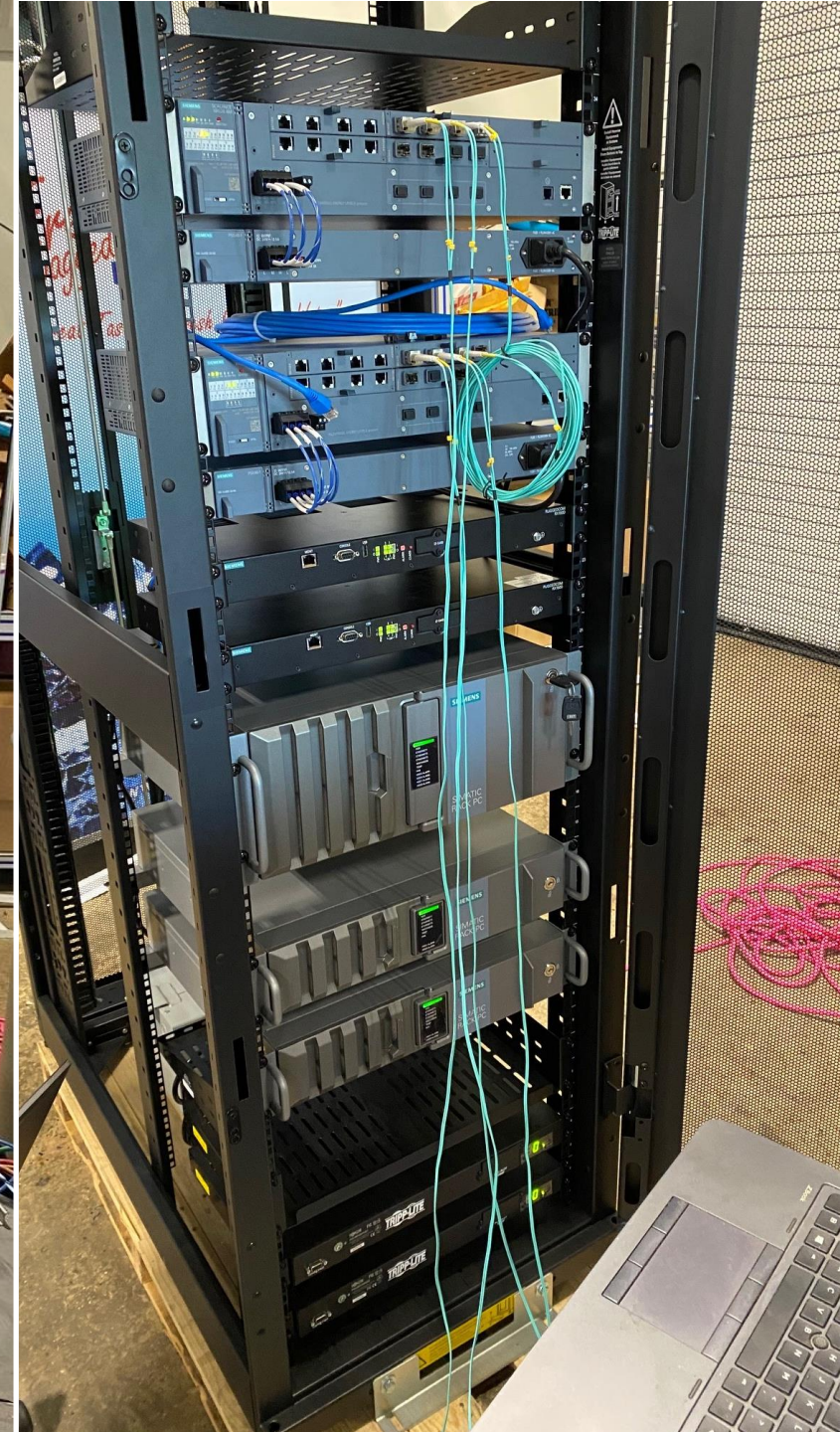




Siemens can perform custom pre-configuration of purchased hardware, so units arrive on-site ready out of the box. **This service provides true plug and play for your commissioning teams.**

Along with Pre-configuration, we offer Testing services, which means your pre-configured products are staged and tested based on your custom requirements, and we perform a Factory Acceptance Test (FAT) before shipping.

SIEMENS





Pre-configuration
and Testing **cuts the
average system
installation time
significantly.**



These services also **greatly reduce the risk of failure during onsite commissioning and deployment.**

You can purchase
Pre-configuration
and Testing
separately, giving
you **greater
flexibility.**





Customers choose expert Siemens Pre-configuration and/or **Testing in nearly half of all project-based service engagements.**

All work is performed by Siemens network consultants who are **highly trained and certified in both IT and OT, with many years of application experience.**

SIEMENS





With Siemens
Pre-configuration
and Testing, your
team can push
forward on other
elements of the
project, getting
you even closer
to the finish line.

SIEMENS

Contact us to learn more about saving time and money with Pre-configuration and Testing Services.

siemensci.us@siemens.com



SIEMENS

usa.siemens.com/industrial-networks-services