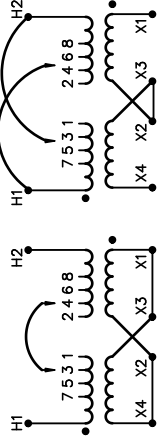


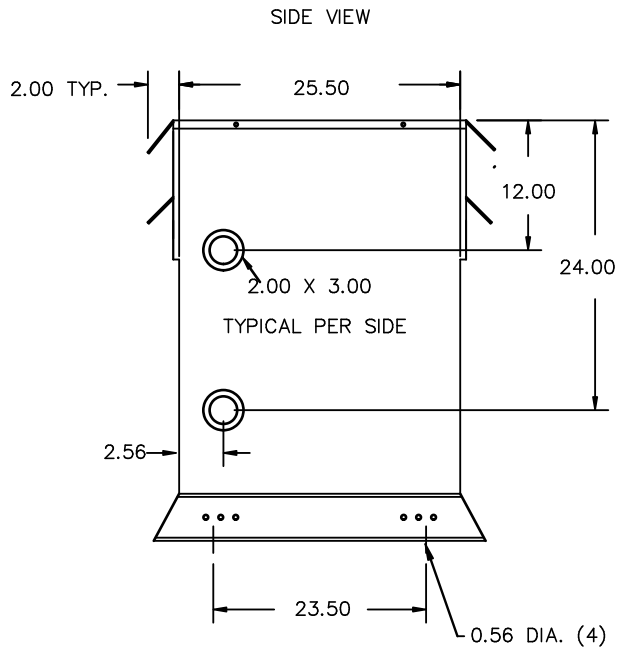
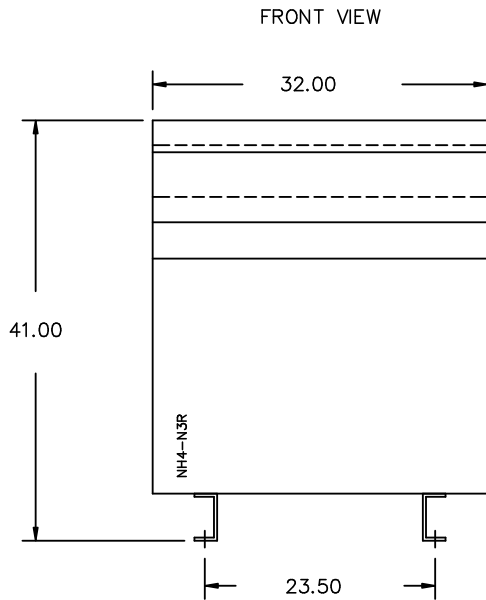
REVISION	DATE	BY	DATE	BY
		DRAWN	06/12/14	JW
		CHEK'D		
		VERIF'D		

Confidential - Property of Siemens Industry, Inc. Building Technologies Division		
CUSTOMER		
ORDER NO.	DWG. NO.	
	1D1Y075FTP1	SH 1 OF 2

SIEMENS

<p>CATALOG NO. 1D1Y075FTP1</p> <p>SERIAL NO. SERIES H</p> <p>75 kVA 60 Hz 1 PHASE</p> <p>5.8 % IMP AT 135 °C</p> <p>115 °C RISE °C AVG. AMBIENT</p> <p>220 °C TEMP CLASS °C MAX. AMBIENT</p> <p>PRIMARY (H1 H2) 240X480 V</p> <p>SECONDARY(X4 X2 X3 X1) 120/240 V</p> <p>WINDING MATERIAL AL</p> <p>ENCLOSURE TYPE NEMA-3R WEIGHT 610 LBS</p> <p>ENERGY EFFICIENCY NEMA TP 1-2002</p> <p>SPACINGS BETWEEN ENCLOSURE AND ANY ADJACENT WALL SHALL BE A MINIMUM OF 6 INCHES</p> <p>SUITABLE FOR INDOOR OR OUTDOOR LOCATIONS DO NOT INSTALL IN AREAS ACCESSIBLE TO PUBLIC FOR INSTALLATION SEE INSTRUCTION MANUAL</p> <p>NEMA Class ANN Dry Type Transformer Siemens Industry, Inc. Norcross, GA</p>	<p>LISTED DISTRIBUTION TRANSFORMER TYPE F</p> <p>UL LR 3902</p> <p>E112313</p>	 <table border="1" style="width: 100%; border-collapse: collapse;"> <thead> <tr> <th>VOLTS</th> <th>CONNECT</th> </tr> </thead> <tbody> <tr><td>504</td><td>1-2</td></tr> <tr><td>492</td><td>2-3</td></tr> <tr><td>480</td><td>3-4</td></tr> <tr><td>468</td><td>4-5</td></tr> <tr><td>456</td><td>5-6</td></tr> <tr><td>444</td><td>6-7</td></tr> <tr><td>432</td><td>7-8</td></tr> <tr><td>252</td><td>H2-1, H1-2</td></tr> <tr><td>240</td><td>H2-3, H1-4</td></tr> <tr><td>228</td><td>H2-5, H1-6</td></tr> <tr><td>216</td><td>H2-7, H1-8</td></tr> </tbody> </table> <table border="1" style="width: 100%; border-collapse: collapse;"> <thead> <tr> <th>VOLTS</th> <th>CONNECT</th> <th>OUTPUT LINE</th> </tr> </thead> <tbody> <tr> <td>120</td> <td>X1-X3, X2-X4</td> <td>X1-X4</td> </tr> <tr> <td>240</td> <td>X2-X3</td> <td>X1-X4</td> </tr> <tr> <td>240/120</td> <td>X2-X3</td> <td>X1-X2-X4</td> </tr> </tbody> </table>	VOLTS	CONNECT	504	1-2	492	2-3	480	3-4	468	4-5	456	5-6	444	6-7	432	7-8	252	H2-1, H1-2	240	H2-3, H1-4	228	H2-5, H1-6	216	H2-7, H1-8	VOLTS	CONNECT	OUTPUT LINE	120	X1-X3, X2-X4	X1-X4	240	X2-X3	X1-X4	240/120	X2-X3	X1-X2-X4
VOLTS	CONNECT																																					
504	1-2																																					
492	2-3																																					
480	3-4																																					
468	4-5																																					
456	5-6																																					
444	6-7																																					
432	7-8																																					
252	H2-1, H1-2																																					
240	H2-3, H1-4																																					
228	H2-5, H1-6																																					
216	H2-7, H1-8																																					
VOLTS	CONNECT	OUTPUT LINE																																				
120	X1-X3, X2-X4	X1-X4																																				
240	X2-X3	X1-X4																																				
240/120	X2-X3	X1-X2-X4																																				



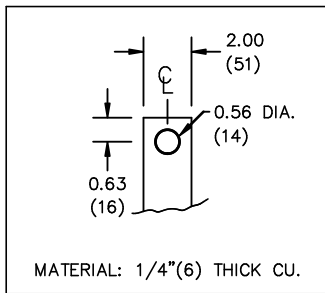
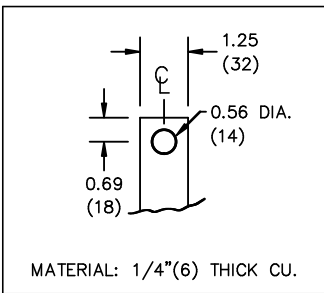


All Dimensions in inches

ENCLOSURE COLOR :ANSI 61 GREY – OUTDOOR

H.V.1. TERMINAL DETAIL

L.V.1. TERMINAL DETAIL



CUSTOMER NOTES:

- HV1 TERMINATED AT TOP REAR
- LV1 TERMINATED AT TOP FRONT

Confidential – Property of
Siemens Industry, Inc.
 Building Technologies Division

REVISION	DATE	BY	DATE	BY
			06/12/14	JW

CUSTOMER	
ORDER NO.	DWG. NO.
	1D1Y075FTP1
SH 2 OF 2	

0.0 jwen 2010/01/21 13:28