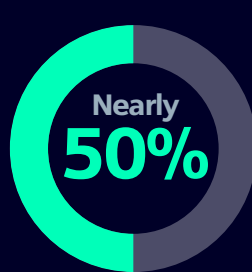




Threats to safety are real

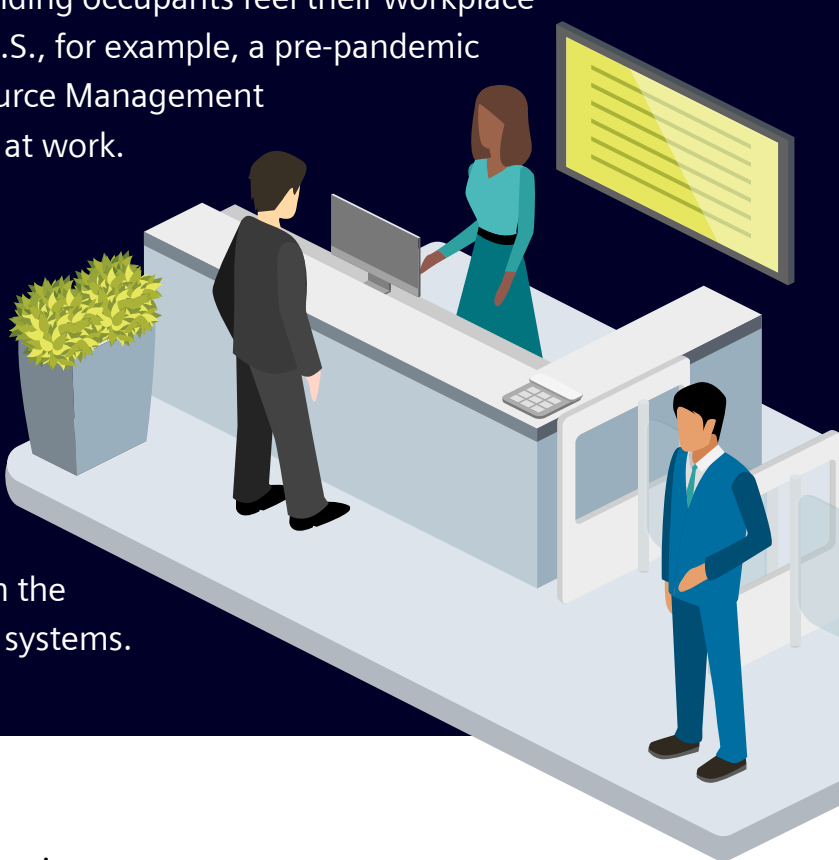
How building owners can improve occupant and visitor **safety and security**

Physical security is critical to achieving a building owner's goal of occupant and visitor safety. However, significant numbers of building occupants feel their workplace environment lacks proper security. In the U.S., for example, a pre-pandemic 2019 survey by the Society of Human Resource Management revealed that 1 in 7 workers didn't feel safe at work.



Nearly 50% of HR professionals said their organization had at some point experienced a workplace violence

incident at some level — up from 36 percent in 2012. Building owners are clearly under pressure to keep pace through the deployment of integrated, modern security systems.



Assessing the risks

Threats to security fall into three main categories

1 **Access by unauthorized individuals** with intent to do harm



2 **Threats to business continuity** (emergencies like fires, and power outages)



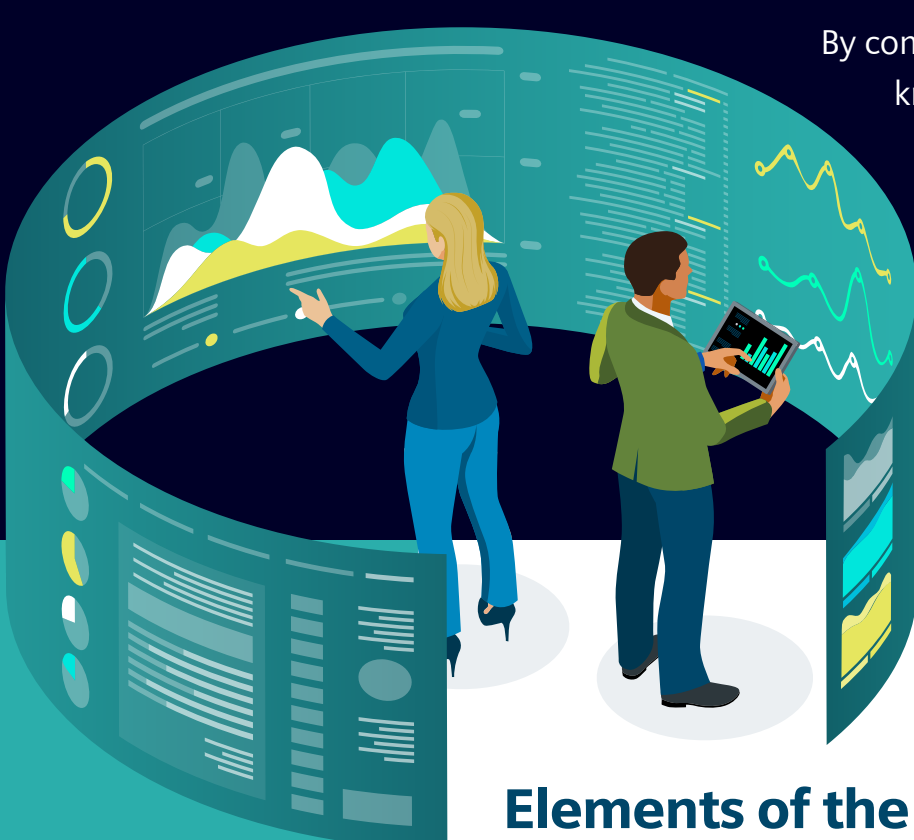
3 **Threats to corporate assets** (theft and/or damage to property).



Security systems like access control and video surveillance can provide much needed reassurance if properly deployed. In fact, the best approach is a unified solution, combining several technologies in a manner that strengthens the depth of defenses. However, integrating diverse systems can be challenging.

Experts like Siemens help to overcome such obstacles

By combining practical security knowledge with the latest modern security technology, Siemens offers integrated control platforms that minimize security exposures while reducing the amount of labor-intensive work involved.



Elements of the Siemens unified, integrated approach

Siemens offers security solutions across many areas of building infrastructure.

Examples include:

Access control and video surveillance | Products like Siemens SiPass integrated and Siveillance Video serve as security management station components that integrate access control, intrusion detection, and video surveillance into a single security platform. The open security architecture interface ensures that new components integrate easily and enhances situational awareness across the building.

Video management | Cloud-based video systems centered on intelligent video analytics and sensor inputs offer the ease and benefit of off-premise video hosting, reduced capital expense, and lower maintenance costs.

Security as a service | Siemens can supplement efforts to manage, maintain, and monitor security systems, lowering risk and enhancing peace of mind.



References

See how the **University of Tennessee Health Science Center** integrated multiple building technologies, including their security platform, by partnering with Siemens.

Learn how the **Panorama Tower in Miami** utilizes Siemens integrated security in the tallest residential tower (85 floors) south of New York City.



Learn more about Siemens smart buildings solutions at usa.siemens.com/cre, or Siemens unified security solutions at usa.siemens.com/security.