

Terminal Blocks

8WA1 Terminals with Screw Connection

Insta or three-tier terminals

Overview

The Insta or three-tier terminals incorporate up to three different terminal functions in one insulating body of 6 mm width. The width of three Insta terminals amounts to the standard spacing in distribution boards of 18 mm. The terminal can only be removed from the mounting rail by means of a tool.

All connection points for incoming and outgoing wires have a groove for an 8WA8 8... labelling plate. The following connections are pre-marked: protective conductor green/yellow and neutral conductor blue.

The N busbar has the same position on Insta terminals and N isolating terminals. Therefore, for example, a 16 mm² N isolating terminal can be used as the incoming terminal to the N busbar.

In the case of the 8WA1 011-3JF16, -3JF17 and -3JF18 with a mounting depth of 42.5 mm, the N busbar can be bypassed.

Grd, L, NT Insta terminal

The 8WA1 011-3JF20 terminal is the basic version for AC circuits. It comprises:

- Grd-conductor connection
- Through-type connection for one phase conductor
- Neutral conductor connection, which can be isolated from the 6 mm × 6 mm N busbar.

Grd, L, N Insta terminal

If no N isolation is required, the 8WA1 011-3JF17 terminal is used:

- Grd-conductor connection
- Through-type connection for one phase conductor
- Through-type connection for the neutral conductor.

Grd, L, L Insta terminal

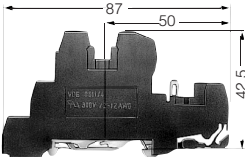
The design of the 8WA1 011-3JF16 terminal corresponds to the aforementioned design. Instead of the through-type connection for the neutral conductor a through-type connection for a second phase conductor has been provided.

L, L Insta terminal

The 8WA1 011-3JF18 terminal includes two through-type connections for two phase conductors. It is generally used for three-phase AC outgoing circuits.




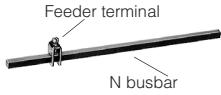
Selection and ordering data

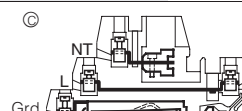
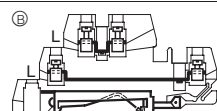
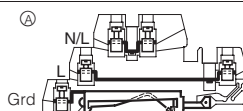
With insulating body of molded thermoplastic · With screw connections on both sides

Dimensions ²⁾	IEC ratings uninterrupted current	AWG ratings current / voltage	Description	Design	Width	Fig. No.	Order No.	Price
8WA1 011-3JF16 to -3JF18, -3JF20	IEC ratings insulation voltage							
					mm ²)			
	24 A 400 V between phase conductors;	20 A 300 V	Insta terminal	Grd, L, L Grd, L, N L, L Grd, L, NT		Ⓐ Ⓐ Ⓑ Ⓒ	8WA1 011-3JF16 8WA1 011-3JF17 8WA1 011-3JF18 8WA1 011-3JF20	
Between link rails with small partitions: Rated insulation voltage a = 400 V b = 160 V, with barrier 400 V.	250 V between phase and ground conductors and for N insulating gap		Barrier , up to 400 V Small partition , up to 160 V		1.5		8WA1 822-7TH00 8WA1 825	

Terminal size 2.5 mm² · Mounting width 6 mm · With screw connections on both sides AWG 22-12

Accessories

8WA2 867/868/870	24 A	Link rail for	2 terminals 3 terminals 4 terminals 10 terminals				8WA1 822-7VF02 8WA1 822-7VF03 8WA1 822-7VF04 8WA1 822-7VF10	
		Cover 1)	with warning arrow white, for inscription 6.5 transparent white, for inscription 6.5	6.5 6.5			8WA1 811 8WA1 862 8WA1 822-7AX01 8WA1 822-7AX03	
8WA1 808	125 A	N busbar 6 mm × 6 mm	1104 mm long 2000 mm long				8GF9 324-2 8WC5 020	
	32 A 76 A	Feeder terminal for N busbar 6 × 6 mm and	connection up to .4 mm ² 25 mm ²				8WA2 867 8WA2 868	
	125 A	10 × 3 mm , bare	35 mm ²				8WA2 870	
8WA1 857		End retainer		10			8WA1 808 8WA1 857	1 packg.
		Insulated carrier					3TX4 210-0H	1 packg.
		Identification label for end retainer (blank label) (1 packg. = 100 units)					8WA8 848-2AY	1 packg.
8GF9 324-2/8WC5 020		Blank labels for terminal designation (1 packg. = 100 units)						
								



Labelling accessories
see page 15/40 - 43

- 1) Up to 3 terminals in parallel.
- 2) 25.4 mm = 1.00 inch