



## BASIC INFORMATION

# Interesting Links for electrical wholesalers

To make it easier for electrical wholesale employees and their customers to deal with Siemens products, solutions and product selection in their daily business, we provide a variety of supporting websites, configurators and tools.

Find here helpful links on general topics, but also on different focus topics with a short description of content and function.

- General information about the e-business platform SiePortal and catalogues
- Siemens tender texts
- Information and configurators for SIRIUS Industrial Controls
- Information and configurators for SENTRON low voltage power distribution and electrical installation technology
- Information and configurators for SIMATIC automation technology
- Information and configurators for drive solutions with SINAMICS and SIRIUS



## General Information

### [SiePortal, the new e-business platform at Siemens](#)

A groundbreaking, intuitive and powerful B2B portal for the product, system and service portfolio within Siemens Digital Industries and Smart Infrastructure.

SiePortal brings together Industry Mall and Siemens Industry Online Support (SIOS) under one roof - and is completely geared to you and your individual requirements.

### [CAx Download Manager](#)

The CAx download manager is a function within the support area in SiePortal and can be used after registration. With the CAx download manager you can download product data, manuals, certificates and CAE or CAD data (e.g. EPLAN macros, 3D models) and thus create and save complete plant documentation.

### [Online Support App](#)

With the Industry Online Support App, you have access to over 300,000 documents of Siemens industry products, specially designed for the use with smart devices, anytime and anywhere.

### [Siemens tender texts:](#)

To support the planners in the preparation of tender and project documents, we provide tender texts for products and systems in electrical power distribution, industrial controls, building technology, drive technology and automation.



# SIRIUS

## Industrial Controls

### [Conversion tool for low-voltage control products](#)

Here you can easily and efficiently find successor products, either successor products for Siemens part numbers or for products of other manufacturers. Enter the previous Siemens part number or a third-party number into the search field and confirm the entry via "Search". Select then the correct product in the filter result and display the result via "Convert".

### [Commanding and signaling devices SIRIUS ACT configurator](#)

Enclosure and labeling can be individually and customer-specific assembled here. Using the automatically generated CIN number, you can reorder your configuration at any time without entering any further data input.

### [Electrical Product Finder](#)

The Electrical Product Finder is a tool for a quick product selection of industrial low-voltage switchgear based on a few parameters.

### [Motor starter 3RM1 configurator](#)

With the configuration for the selection of compact SIRIUS motor starters up to 3kW, you can select and order individual devices or motor starter groups via a few parameters. The reference to necessary accessories is made before the order is completed, and the configuration made can be saved for later reuse.

### [Safety Relays 3SK configurator](#)

You can put together simple safety functions in just a few steps. Simply select the number of sensors and actuators and you will receive the appropriate combination, consisting of basic devices as well as input and output expansions.

### [Simulator "timing function" Timing Relay SIRIUS 3RP25](#)

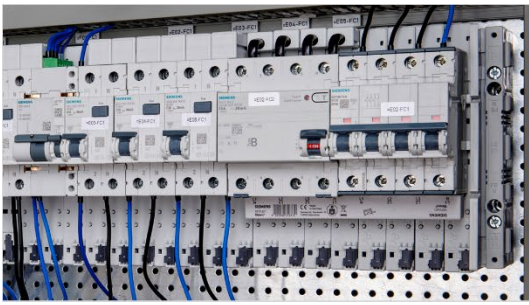
The new simulator for SIRIUS 3RP25 timing relays can be used to visualize the sequence of various timing functions and to simulate a variety of failure cases.

### [Position Switches 3SE5/3SF1 Configurator](#)

The 3SE5/3SF1 position switches are characterized by modern design, innovative technology and simple mounting. The configurator offers the possibility to select the device within the comprehensive range of position switches that exactly fits the respective required application.

### [Explanatory videos SIRIUS Explained](#)

With our explanatory video series #SiriusExplained, we make complex content about products understandable and abstract topics or issues short and simple tangible.



## SENTRON Low-Voltage Power Distribution and Electrical Installation Technology

### [Configurator for Low-voltage \(LV-Configurator\)](#)

Simple and intuitive selection of molded-case circuit breakers 3VA IEC and UL, air circuit breakers 3WA and 3WL and of energy monitoring components SENTRON PAC.

### [Configurator for SENTRON 3LD switch disconnectors](#)

This configurator allows you to select a suitable 3LD switch disconnector incl. compatible accessories for your application.

### [Configurator for SENTRON 3NJ63 switch disconnectors with fuses](#)

The SENTRON 3NJ63 switch disconnector with fuses are used for power distribution in low-voltage switchgear as feed-in and branch switches. They provide overload and short-circuit protection for installations.

### [Configurator for SENTRON 3KF switch disconnectors with fuses](#)

SENTRON 3KF switch disconnectors with fuses protect against overload and short circuit as main and emergency stop switches of switchgear, power distributors, power supply and motor outlets.

### [Configurator for 3NP1 fuse switch disconnectors](#)

Thanks to its modular design, the 3NP1 fuse switch disconnector enables a wide range of switch combinations. In addition to the selection of ready-to-install switches available ex works, this configurator also allows you to put together application-specific devices as well as the matching accessories.

### [Explanatory videos SENTRON Explained](#)

With our explanatory video series #SentronExplained we make complex content about products understandable and abstract topics or issues short and simple tangible.



## Drive Technology

### [Siemens Product Configurator](#) (successor of the DT Configurator)

The Siemens Product Configurator supports users in configuring the optimal drive products for their application, ranging from gears, motors, converters to related options and components to controllers, software licenses, and connection technology. Available documentation is ready for download.

### [Decision Guide Motor Start](#)

The Decision Guide Motor Start enables you to find the right drive solution for starting and operating three-phase asynchronous motors. Via a short query about the application, this tool leads to the optimal individual drive solution. Based on this solution approach, you then arrive at the right product configurator for selecting the appropriate products.

### [Drive design with SIZER](#)

Based on your application, this tool provides step-by-step support in the definition of the mechanical system and the dimensioning of drives, motors and gearboxes. It also helps in configuring other system components and sizing the control and regulation functions

### [Micromaster Retrofit Configurator](#)

With the retrofit kit, you can easily convert from Micromaster to SINAMICS and receive all relevant components and documentation to perform the conversion yourself.

### [SINAMICS Selector App](#)

The frequency converter selection guide for on the move.

With the SINAMICS SELECTOR app, Siemens has developed a practical tool that allows you to quickly and easily compile the article numbers for your SINAMICS converter in the power range from 0.12 kW to 630 kW.

### [Energy efficiency tool SinaSave](#)

Determine the energy and CO<sub>2</sub> savings potential with SinaSave. Based on your application parameters, you get a prediction of your energy consumption, TOC and more!

### [Simulation Tool for Soft Starters \(STS\)](#)

With the STS (Simulation Tool for Soft Starters), a comfortable soft starter design is possible via a simple, fast and user-friendly user interface. By simply entering motor and load data, the application is simulated and suitable soft starters are then suggested.



## SIMATIC Automation Technology

### [TIA Selection Tool](#)

Software for planning and configuring automation projects with the ability to select and order correct products - error-free and always up-to-date. Suggestions for product additions, intelligent selection aids and plausibility checks; visualization of the projects to be configured. Configurations can be tested and simulated in advance; they can be saved, archived for reuse, derived or ordered directly.

### [Application examples for automation solutions](#)

Here you will find various, fully developed automation solutions including a description and selection of the required components from the field of basic automation.

### [Configurator for SIMATIC Industry PCs](#)

With PC-based automation, applications and solutions can be implemented that go far beyond the functions of a classic controller. SIMATIC PC-based products offer you a flexible, innovative and long-term available platform with which the challenges of the digital factory become a home game for your machines and systems.

### [PIA Life Cycle Portal](#)

The tool for selection, planning, ordering, commissioning and maintenance for process instrumentation and analytics. The portal supports you in finding the optimal solution from the extensive Siemens portfolio of process instrumentation and analytics products and their possible applications – simple, uncomplicated, fast and comprehensive.



## Siemens Building Technology

### [Technical Product data base](#)

Our technical product database supports you in every KNX project - from planning to execution and operation of the building. Whether technical data sheets, ETS files or additional software - here you will find all documents bundled on one website.

### [HIT Portal - Planning, Designing, Documentation](#)

The HIT portal simplifies the time-consuming search for suitable products for the desired application. It offers more than 300 preconfigured standard applications classified according to potential energy savings in accordance with EN 15232. In addition, specifications including system diagram, material list, technical documentation for each device, and price calculation are available.

### [Smart Information Delivery \(SID\) Tool](#)

This portal provides online access to product information such as brochures, instructions, specifications and building services data sheets. Use a combination of text search and filter criteria to find exactly what you want!

### [Web-Based Trainings](#)

These online training courses (WBT) are intended for electrical installers, KNX system integrators and electrical planners who want to learn the basic functions of these devices and identify possible applications in KNX installations.

Published by  
Siemens AG  
Smart Infrastructure  
Electrical Products  
Werner-von-Siemens-Str. 48 –50  
92224 Amberg, Germany

For the U.S. published by  
Siemens Industry Inc.  
100 Technology Drive  
Alpharetta, GA 30005,  
United States

Subject to change without  
prior notice 02/2023

Changes and errors excepted.

The information provided in this brochure contains merely descriptions or characteristics of performance which in case of actual use do not always apply as described or which may change as a result of further development of the products. An obligation to provide the respective characteristics shall only exist if expressly agreed in the terms of contract.

© 2023 by Siemens AG, Berlin and Munich

# SIEMENS