



**SIEMENS**

# Increase lab safety and efficiency

Siemens Laboratory Performance Services improve lab conditions and maximize energy efficiency

## Improve laboratory performance

Laboratories are sophisticated environments. Maintaining proper room temperature, air quality, airflow and control is critical to worker safety, research integrity and regulatory compliance. Historically, to maintain these optimum environments, laboratories use three-to-eight times as much energy as other types of buildings. Siemens Laboratory Performance Services is designed to help your lab maintain quality requirements while maximizing energy efficiency. As a result, you maintain and improve laboratory conditions and eliminate unnecessary energy use.

## A more thorough approach to lab services

Too often, lab services rely upon quarterly or annual preventative maintenance reviews to identify device failures and system overrides. Our Laboratory Performance Services is more thorough. It continually monitors your laboratory's critical control devices and building automation system to capture real-time performance results. It then generates a series of reports that not only spot anomalies in airflow and ventilation, but also find areas that may need repairs. Its continual monitoring allows you to respond quickly to calibrate equipment and adjust system controls.

**Answers for infrastructure.**

Quickly identify problem areas and apply energy efficiency improvements using detailed summary reports.

Lab Facility Room Comparison			
Room Performance Comparison			
Start date 3/1/11 12:00 AM End date 4/1/11 12:00 AM			
Nodes	Satisfactory Temperature	Satisfactory Directional Airflow	Satisfactory Ventilation
1 Lab N218	99.27	100.00	100.00
2 Lab N218-2	99.45	100.00	100.00
3 Lab N311	67.40 *	100.00	100.00
4 Lab N319	95.04	100.00	99.97
5 Lab N321	98.97	100.00	100.00
	<b>87.84</b>	<b>100.00</b>	<b>99.99</b>
	<b>87.84</b>	<b>100.00</b>	<b>99.99</b>

### Improve performance and energy efficiency with data

The detailed information you receive from our Laboratory Performance Services can help prioritize areas for service resulting in immediate improvements in your labs' performance and efficiency. Our service:

- Identifies the areas that need immediate attention
- Presents lab performance in a format that lab occupants can easily understand

If performance in a lab is seen to be within your acceptable parameters, you can focus on improving energy efficiency. The first step to increased energy efficiency in a lab is understanding the airflow drivers, such as fume hood use, contaminant removal and cooling levels. An Airflow Driver report provides information based on operational data. Using this report, energy conservation measures can be discussed and implemented.

### Five reasons for Laboratory Performance Services

Siemens Laboratory Performance Services can help reduce costs and improve safety and lab performance quality. In addition, it provides facility, lab, and energy managers with the following key benefits:

#### Convenience

- Collect critical data without manual input.
- Obtain meter readings via e-mail.

#### Accessibility

- Access data through any internet connection.

#### Scalability

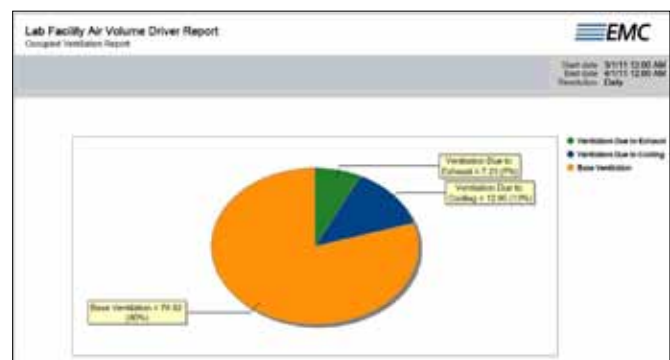
- Expand your operations without reducing the quality of our services. We can grow with you without interruptions.

#### Security

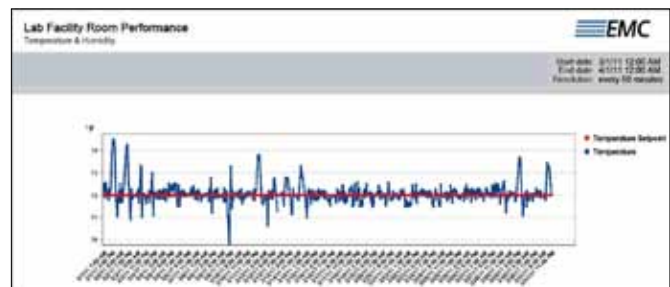
- Secure all data with our proprietary, secure servers.

#### Flexible

- Obtain multiple reporting formats (pdf, html and CSV) for your convenience.



Identify areas for efficiency improvements using operational data and Airflow Driver reports.



Troubleshoot and identify performance problems with daily temperature and humidity reports.

Siemens Industry, Inc.  
 Buffalo Grove, IL 60089  
 Tel: (847) 215-1000  
 Fax: (847) 215-1093

Copyright 2011  
 Siemens Industry, Inc.  
 All rights reserved.  
 (9/11, Part# 153-BAU-21)