



Service Entrance Switches

3 Pole, 30 Amp, Type 1 (Indoor)

Features

- Suitable for use as service equipment
- Maximum short circuit current rating of 200 kA RMS symmetrical at 240V AC Max
- Continuous load 80% of fuse rating except for motor circuits
- CSA Certified under file #13076
- Compact load break switch rated for service entrance applications at 240V
- Type 1 enclosure for indoor applications
- Solid neutral bonded to the enclosure
- Padlock provision available for the OFF position
- Use C.S.A certified, H.R.C. fuses. Form I (Class J, R or H) and Form II fuses if the accepted adaptor kits are provided
- Manufactured in Canada for quick delivery and easy access to replacement parts

General information*

Part number	Max. voltage	Description	Unit weight – lbs (kg)
SE221	240V AC	2 Pole, 3 Wire, Fusible	9.11 (4.13)
SE321	240V AC	3 Pole, 4 Wire, Fusible	9.3 (4.22)

* Not suitable for direct current systems or motor circuits

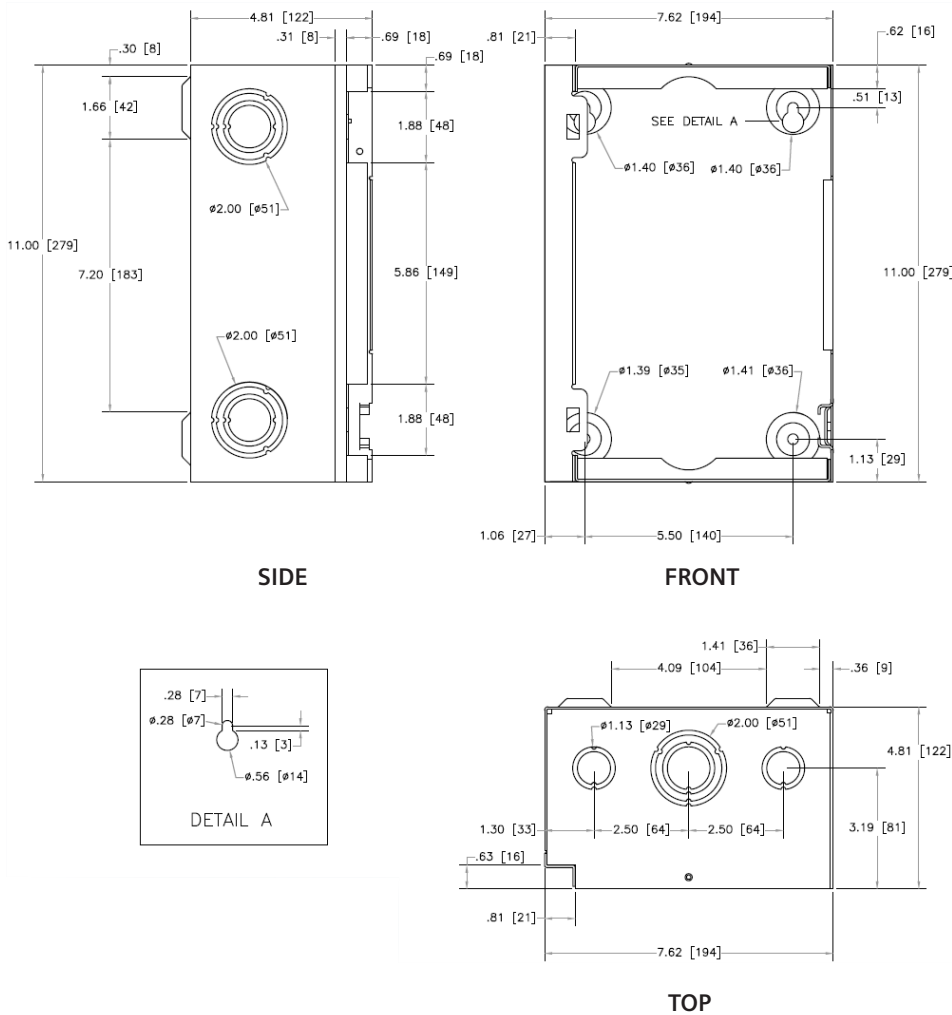
Accessories

RFAK21	Type R fuse kit 240V (Order one per pole)
FP2	Fuse puller kit (Order one per 3-pole switch)
CCSS1	Replacement cover catch kit (20 pieces per kit)
LSK1	Replacement line shield kit (three pieces per kit)

Lug size data

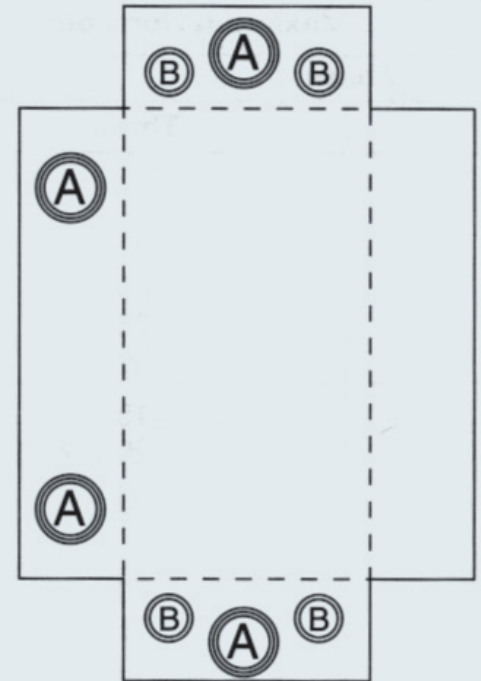
Amp rating	Lugs/Pole	Wire range; Copper or Aluminium	
		Line and load	Neutral
30	1	#14 - 2 AWG	#14 - 4 AWG

Dimension drawings – units: inches [mm]



Knock-out diagram

30 Amp Enclosure, Type SE

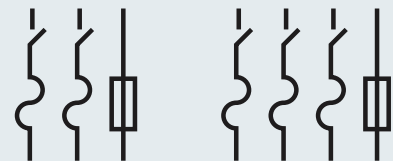


K.O.'s trade size

A = 3/4", 1", 1 1/4", 1 1/2"

B = 1/2", 3/4"

Wiring diagrams



SE221

SE321

Siemens Canada Limited
Energy Management Division
Low Voltage & Products
1577 North Service Road East
Oakville, ON L6H 0H6

Customer Interaction Centre
(888) 303-3353
cic.ca@siemens.com

Subject to change without prior notice.
Printed in Canada.
© 2018 Siemens Canada Limited
Order No: EM-LP-1525

The information provided in this flyer contains merely general descriptions or characteristics of performance which in case of actual use do not always apply as described or which may change as a result of further development of the products. An obligation to provide the respective characteristics shall only exist if expressly agreed in the terms of contract.

All product designations may be trademarks or product names of Siemens AG or supplier companies whose use by third parties for their own purposes could violate the rights of the owners.

Service Entrance Switches

3 Pole, 60 Amp, Type 1 (Indoor)

Features

- Suitable for use as service equipment
- Maximum short circuit current rating of 200 kA RMS symmetrical at 240V AC Max
- Continuous load 80% of fuse rating except for motor circuits
- CSA Certified under file #13076
- Compact load break switch rated for service entrance applications at 240V
- Type 1 enclosure for indoor applications
- Solid neutral bonded to the enclosure
- Padlock provision available for the OFF position
- Use C.S.A certified, H.R.C. fuses. Form I (Class J, R or H) and Form II fuses if the accepted adaptor kits are provided
- Manufactured in Canada for quick delivery and easy access to replacement parts

General information*

Part number	Max. voltage	Description	Unit weight – lbs (kg)
SE222	240V AC	2 Pole, 3 Wire, Fusible	10.95 (4.97)
SE322	240V AC	3 Pole, 4 Wire, Fusible	11.29 (5.12)

* Not suitable for direct current systems or motor circuits

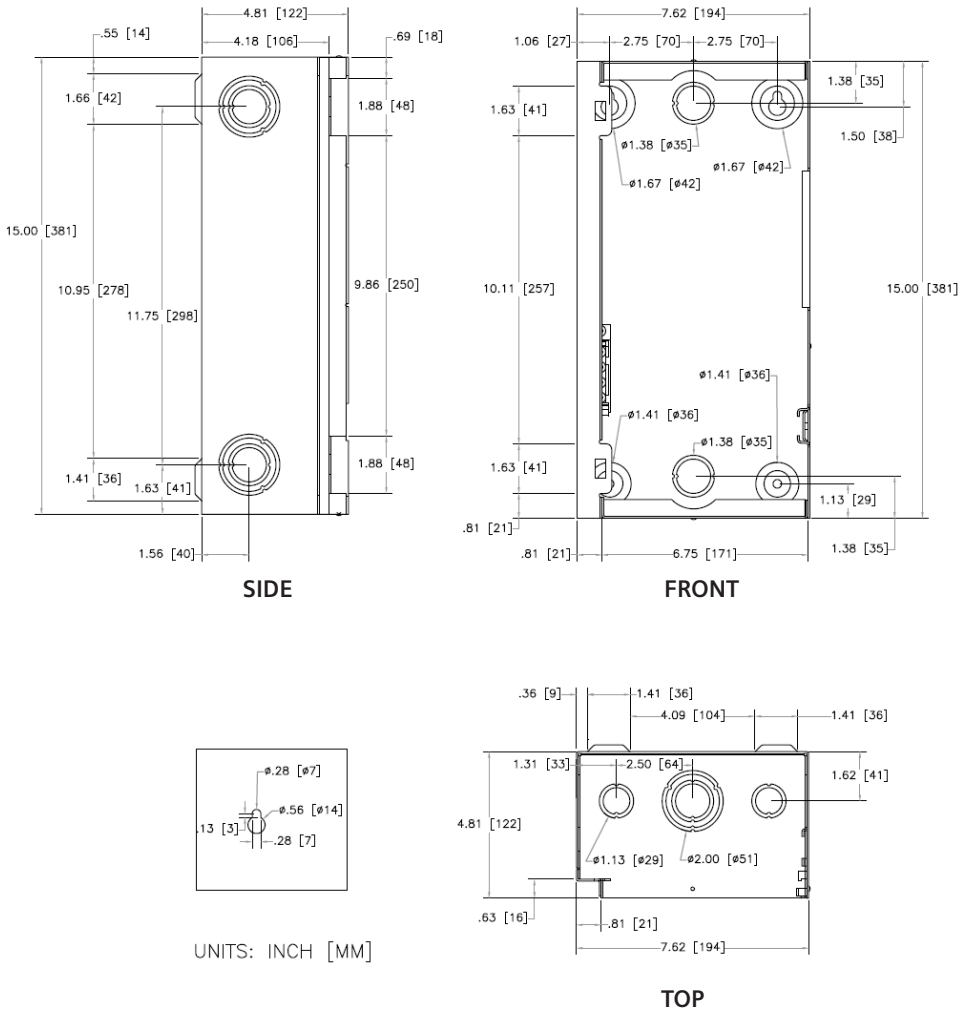
Accessories

RFAK22	Type R fuse kit 240V (Order one per pole)
FP2	Fuse puller (Order one per 3-pole switch)
CCSS1	Replacement cover catch kit (20 pieces per kit)
LSK1	Replacement line shield kit (three pieces per kit)

Lug size data

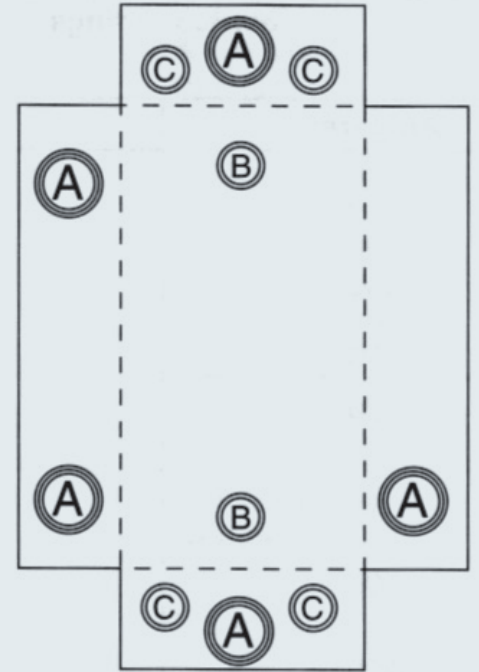
Amp rating	Lugs/Pole	Wire range; Copper or Aluminium	
		Line and load	Neutral
60	1	#14 - 2 AWG	#14 - 4 AWG

Dimension drawings – units: inches [mm]



Knock-out diagram

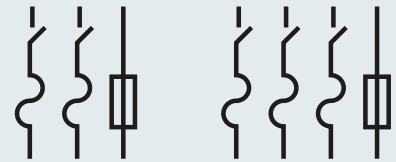
60 Amp Enclosure, Type SE



K.O.'s trade size

A = $\frac{3}{4}$ " , 1" , $1\frac{1}{4}$ " , $1\frac{1}{2}$ "
 B = $\frac{3}{4}$ " , 1"
 C = $\frac{1}{2}$ " , $\frac{3}{4}$ "

Wiring diagrams



SE222

SE322

Siemens Canada Limited
 Energy Management Division
 Low Voltage & Products
 1577 North Service Road East
 Oakville, ON L6H 0H6

Customer Interaction Centre
 (888) 303-3353
 cic.ca@siemens.com

Subject to change without prior notice.
 Printed in Canada.
 © 2018 Siemens Canada Limited
 Order No: EM-LP-1527

The information provided in this flyer contains merely general descriptions or characteristics of performance which in case of actual use do not always apply as described or which may change as a result of further development of the products. An obligation to provide the respective characteristics shall only exist if expressly agreed in the terms of contract.

All product designations may be trademarks or product names of Siemens AG or supplier companies whose use by third parties for their own purposes could violate the rights of the owners.

Service Entrance Switches

3 Pole, 100 Amp, Type 1 (Indoor)

Features

- Suitable for use as service equipment
- Maximum short circuit current rating of 200 kA RMS symmetrical at 240V AC Max
- Continuous load 80% of fuse rating except for motor circuits
- CSA Certified under file #13076
- Compact load break switch rated for service entrance applications at 240V
- Type 1 enclosure for indoor applications
- Solid neutral bonded to the enclosure
- Padlock provision available for the OFF position
- Use C.S.A certified, H.R.C. fuses. Form I (Class J, R, T or H) and Form II fuses if the accepted adaptor kits are provided
- Manufactured in Canada for quick delivery and easy access to replacement parts

General information*

Part number	Max. voltage	Description	Unit weight – lbs (kg)
SE223	240V AC	2 Pole, 3 Wire, Fusible	10.95 (4.97)
SE323	240V AC	3 Pole, 4 Wire, Fusible	11.29 (5.12)

* Not suitable for direct current systems or motor circuits

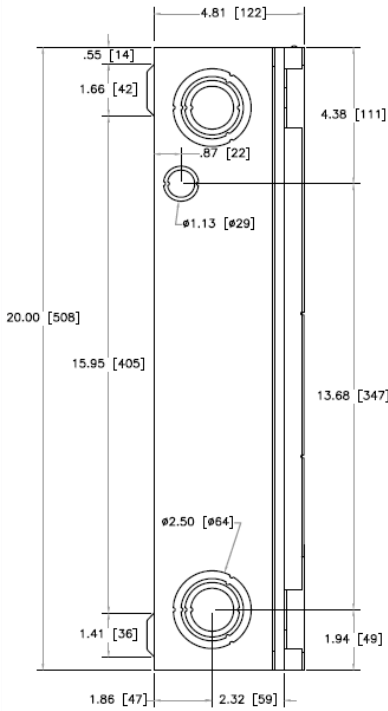
Accessories

RFAK3	Type R fuse kit 240V (Order one per pole)
TFAK23	Type T fuse kit 240V (Order one per pole)
FP3	Fuse puller kit (Order one per 3-pole switch)
CCSS1	Replacement cover catch kit (20 pieces per kit)
LSK3	Replacement line shield kit (three pieces per kit)

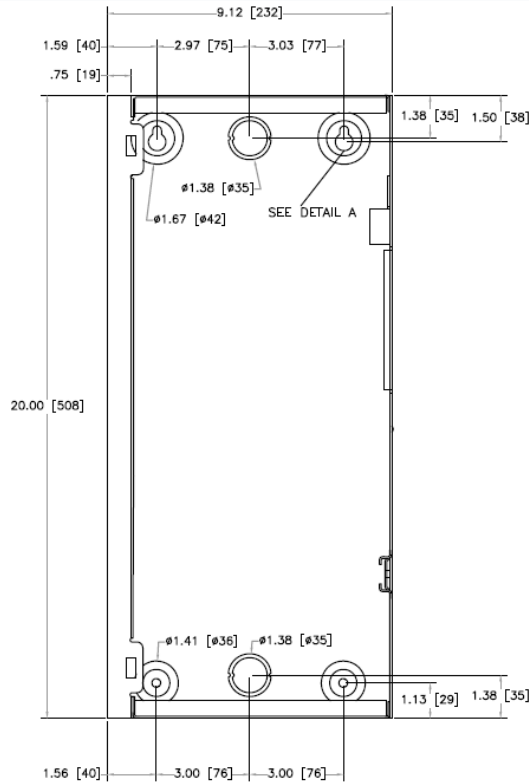
Lug size data

Amp rating	Lugs/Pole	Wire range; Copper or Aluminium	
		Line and load	Neutral
100	1	Line: #6 - 1/0 AWG Load: #14 - 1/0 AWG	#14 - 2/0 AWG

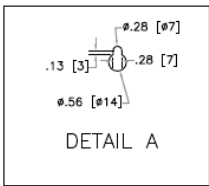
Dimension drawings – units: inches [mm]



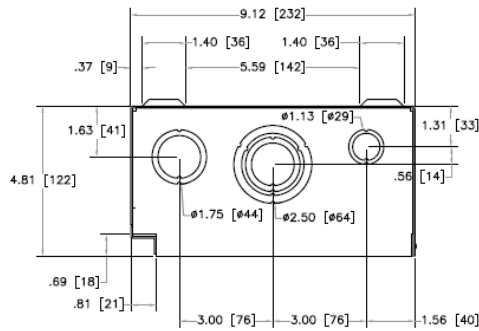
SIDE



FRONT



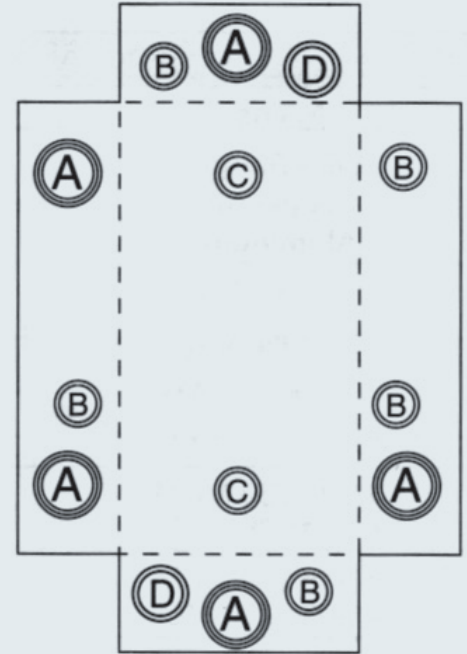
DETAIL A



TOP

Knock-out diagram

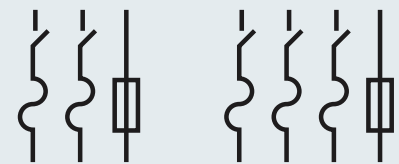
100 Amp Enclosure, Type SE



K.O.'s trade size

- A = 1", 1 1/4", 1 1/2", 2"
- B = 1/2", 3/4"
- C = 3/4", 1"
- D = 1", 1 1/4"

Wiring diagrams



SE223

SE323

Siemens Canada Limited
 Energy Management Division
 Low Voltage & Products
 1577 North Service Road East
 Oakville, ON L6H 0H6

Customer Interaction Centre
 (888) 303-3353
 cic.ca@siemens.com

Subject to change without prior notice.
 Printed in Canada.
 © 2018 Siemens Canada Limited
 Order No: EM-LP-1529

The information provided in this flyer contains merely general descriptions or characteristics of performance which in case of actual use do not always apply as described or which may change as a result of further development of the products. An obligation to provide the respective characteristics shall only exist if expressly agreed in the terms of contract.

All product designations may be trademarks or product names of Siemens AG or supplier companies whose use by third parties for their own purposes could violate the rights of the owners.

Service Entrance Switches

3 Pole, 200 Amp, Type 1 (Indoor)

Features

- Suitable for use as service equipment
- Maximum short circuit current rating of 200 kA RMS symmetrical at 240V AC Max
- Continuous load 80% of fuse rating except for motor circuits
- CSA Certified under file #13076
- Compact load break switch rated for service entrance applications at 240V
- Type 1 enclosure for indoor applications
- Solid neutral bonded to the enclosure
- Padlock provision available for the OFF position
- Use C.S.A certified, H.R.C. fuses. Form I (Class J, R, T or H) and Form II fuses if the accepted adaptor kits are provided
- Manufactured in Canada for quick delivery and easy access to replacement parts

General information*

Part number	Max. voltage	Description	Unit weight – lbs (kg)
SE224	240V AC	2 Pole, 3 Wire, Fusible	29.08 (13.19)
SE324	240V AC	3 Pole, 4 Wire, Fusible	29.52 (13.39)

* Not suitable for direct current systems or motor circuits

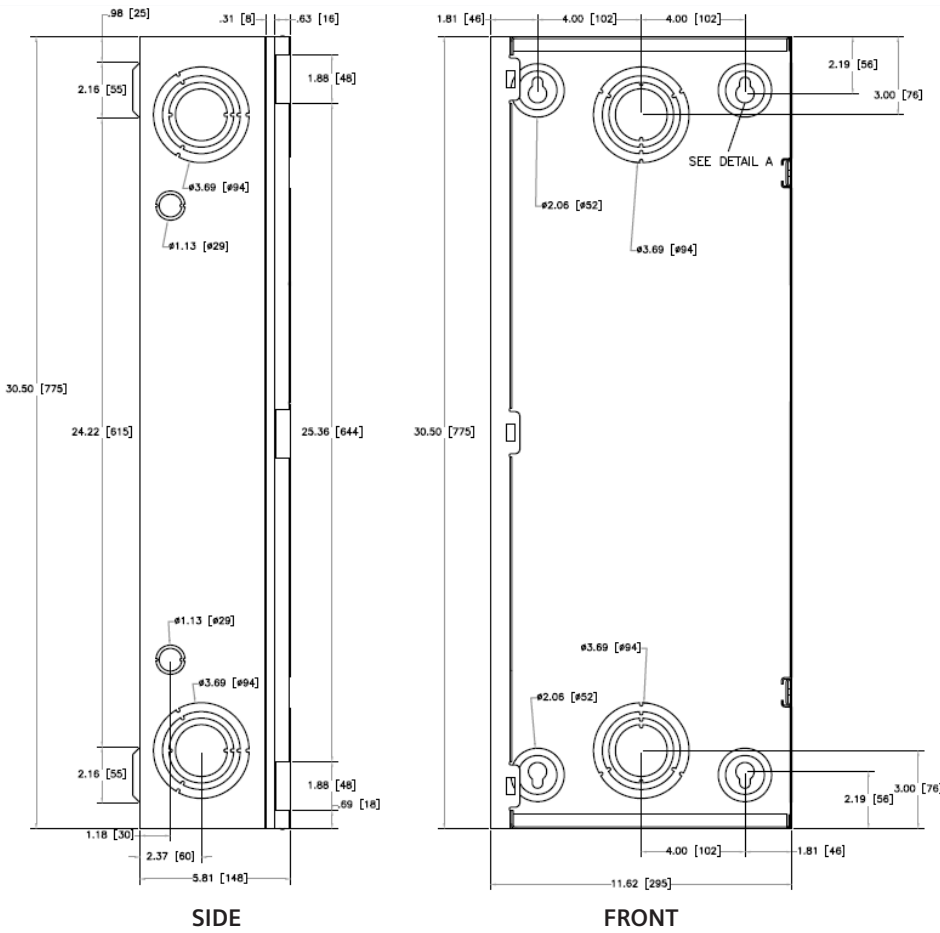
Accessories

RFAK4	Type R fuse kit (Order one per pole)
TFAK24	Type T fuse kit 240V (Order one per pole)
FP4	Fuse puller (Order one per 3-pole switch)
CCSS1	Replacement cover catch kit (20 pieces per kit)
LSK4	Replacement line shield kit (three pieces per kit)

Lug size data

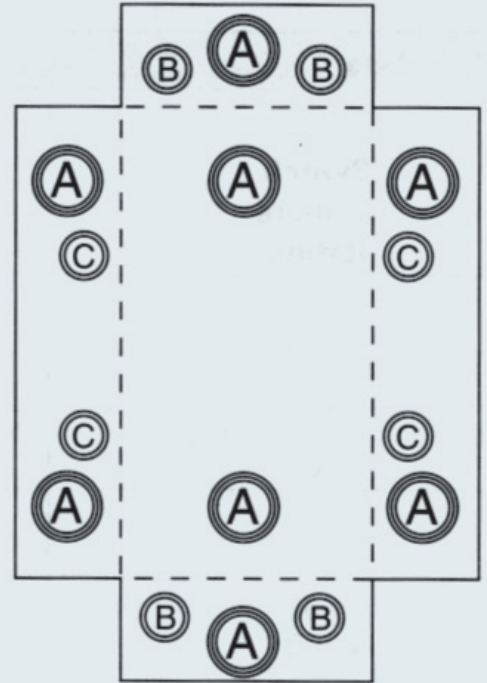
Amp rating	Lugs/Pole	Wire range; Copper or Aluminium	
		Line and load	Neutral
200	1	#6 - 250 MCM	#6 - 300 MCM

Dimension drawings – units: inches [mm]



Knock-out diagram

200 Amp Enclosure, Type SE

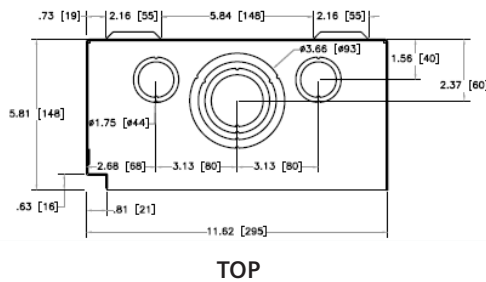
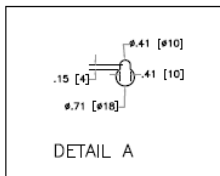


K.O.'s trade size

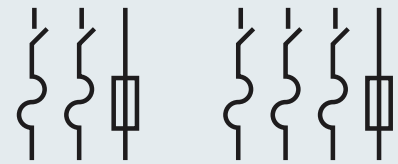
A = 1½", 2", 2½", 3"

B = 1", 1¼"

C = ½", ¾"



Wiring diagrams



SE224

SE324

Siemens Canada Limited
 Energy Management Division
 Low Voltage & Products
 1577 North Service Road East
 Oakville, ON L6H 0H6

Customer Interaction Centre
 (888) 303-3353
 cic.ca@siemens.com

Subject to change without prior notice.
 Printed in Canada.
 © 2018 Siemens Canada Limited
 Order No: EM-LP-1531

The information provided in this flyer contains merely general descriptions or characteristics of performance which in case of actual use do not always apply as described or which may change as a result of further development of the products. An obligation to provide the respective characteristics shall only exist if expressly agreed in the terms of contract.

All product designations may be trademarks or product names of Siemens AG or supplier companies whose use by third parties for their own purposes could violate the rights of the owners.