

Working safely with the stationary SIVIS® camera system

The stationary SIVIS® camera system for the 3AP1 DTC, makes it possible to quickly and easily check the disconnecter and earthing switch positions. The system is a complementary solution for already existing position indicators on earthing disconnecter operating mechanisms. Thanks to its space-saving design, the system can be integrated in the DTC control cabinet and can be easily operated from there.

The cameras are mounted directly on the inspection window of the disconnecter and earthing switch modules. An additionally installed LED lighting improves the view of the contacts.

A camera cable, which is protected from the effects of the weather by a corrugated tube, connects the cameras to the camera control system in the control cabinet. Plug connectors on the end of the cable ensure simple and quick connection to the control board.

Flexible camera cable lengths from up to 20 m make it possible for us, depending on the individual requirements of your switchgear, to supply a stationary camera system for all of our DTC variants.



Fixed mounted cameras on the disconnecter and earthing switch module

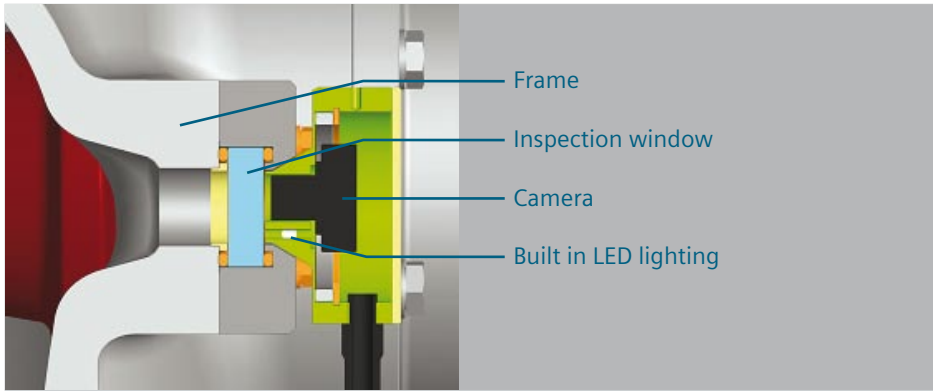
Advantages:

- Uncomplicated and simple visual monitoring of the disconnecter and earthing switch position at any time
- Increased safety for service and maintenance personnel
- Integrated galvanic separation on the camera control board protects the secondary equipment of the compact switchgear
- Quick monitoring of up to 18 positions

The stationary SIVIS® camera system for the 3AP1 DTC

Answers for energy.

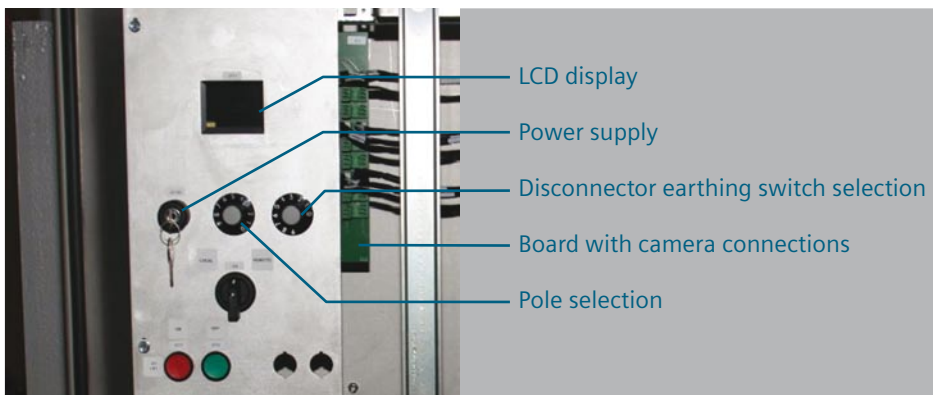
SIEMENS



Cross-section of camera assembly

The components of the stationary camera system are:

- Up to six camera assemblies per pole (up to 18 cameras in total)
- The control cabinet unit for switching between camera images using rotary selector switches
- The LCD display installed in the control cabinet for camera image visualisation



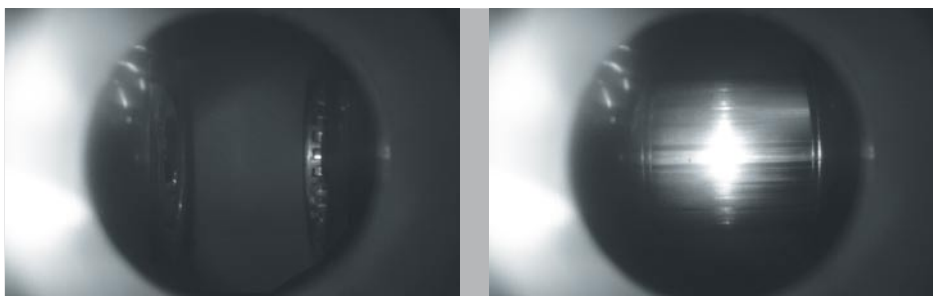
Switch selection and display in control cabinet

Up to 18 cameras can be connected to the camera system control board and monitored.

There are two rotary selector switches for camera selection, one for defining the pole, one for defining the disconnector or the earthing switch. A view of the current position appears on the integrated LCD display for the respective camera.

The monitoring of the disconnector, earthing switch and high speed earthing switch positions is made easy for your maintenance and service personnel during maintenance. The stationary SIVIS® camera system thus further improves the safety standards of your switchgear.

And all that regardless of the respective switchgear requirements or weather conditions, just as you have come to expect from the 3AP1 DTC and other Siemens switchgear.



Opened disconnector contact

Closed disconnector contact

For further information
please contact us at:
circuit-breaker@siemens.com

Published by and copyright © 2011:
Siemens AG
Energy Sector
Freyeslebenstrasse 1
91058 Erlangen, Germany

Siemens AG
Energy Sector
Power Transmission Division
High Voltage Products
Nonnendammallee 104
13629 Berlin, Germany

For more information please contact our
Customer Support Center.
Phone: +49 180 524 7000
Fax: +49 180 524 2471
(Charges depending on provider)
Email: support.energy@siemens.com

Power Transmission Division
Order No. E50001-G630-A202-X-4A00
Printed in Germany

Mu 09113.0
Printed on elementary chlorine-free
bleached paper.

All rights reserved.
Trademarks mentioned in this document are the
property of Siemens AG, its affiliates, or their
respective owners.

Subject to change without prior notice.
The information in this document contains general
descriptions of the technical options available,
which may not apply cases. The required technical
options should therefore be specified in the
contract.